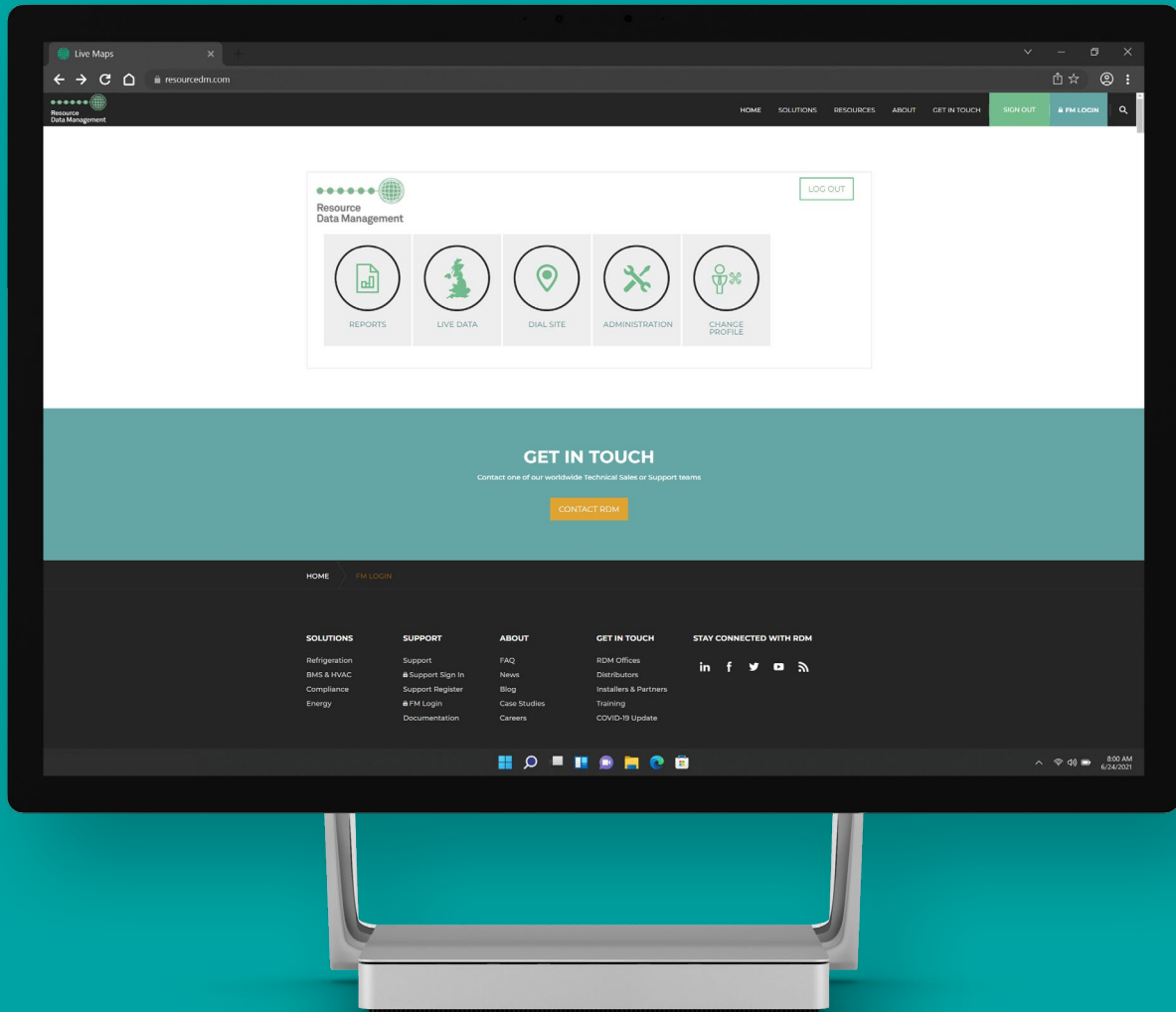


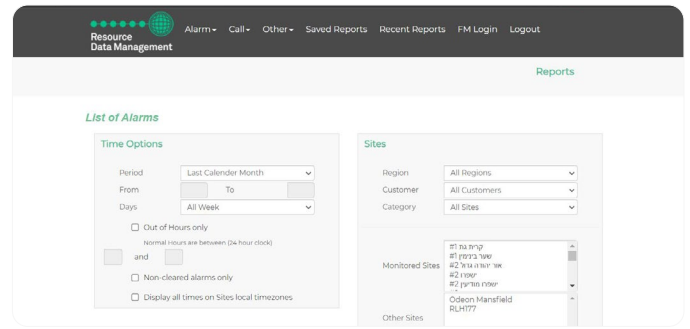
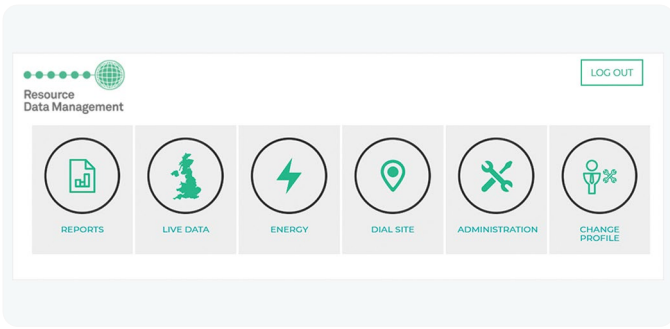
ActiveFM™



ENTERPRISE REMOTE MONITORING & PREDICTIVE MAINTENANCE SOFTWARE

ActiveFM™ is a web-based remote monitoring software platform, providing facility managers with HVACR asset protection, incident and alarm handling, and energy management capabilities. Available in five packages, the service can range from basic remote access and alarm forwarding to 24/7 monitoring by a dedicated RDM Incident Handling team.

ActiveFM displays information in dashboards accessible through a standard web browser. It shows complex data in a user-friendly format, provides analytical tools, warnings, notifications and alerts users to critical alarms in real-time. This helps to prevent equipment breakdowns, ensure temperature compliance, and reduce maintenance and energy costs.

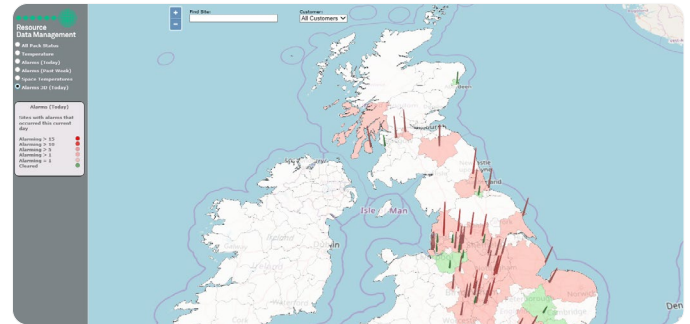
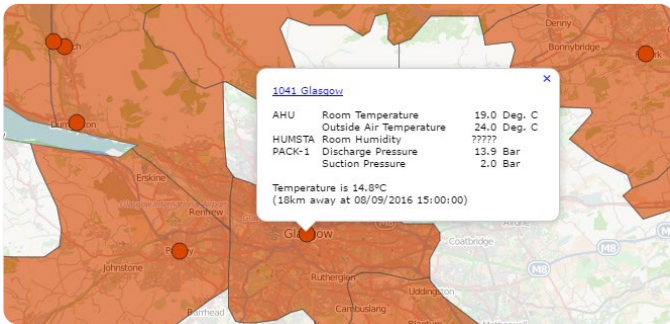


Web-Based Site Access

ActiveFM's web-based dashboard provides one-click access directly into connected sites, allowing authorised users to remotely view and make changes at a site. Data storage, device backups and reports for statistical analysis can also be accessed using only a standard web browser.

Remote Changes

Several convenient features help users quickly identify issues or make necessary changes across an enterprise of dozens or even hundreds of sites. These include global parameter changes and automatic daily backups of sitewide configuration files, PLC programs, temperature data and alarm and notification logs.



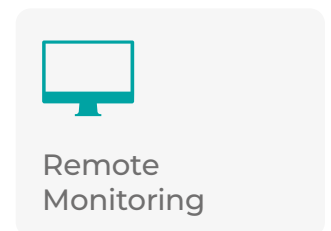
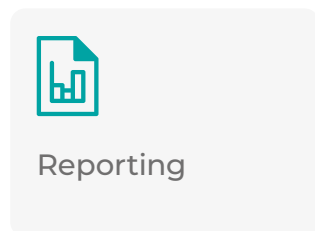
Live Maps

Live Maps is a tool unique to RDM. The Live Maps plug-in gives a geographical view of all sites with real-time condition indicators. It displays site locations in a map view that allows users to zoom in on specific sites to view readings and data for their custom parameters.

Temperature Performance Indicator (TPI)

TPI shows the performance of a display cabinet, coldroom, or a circuit by assigning a performance score. When selecting the TPI option within Live Maps, the map displays the regions which are not meeting the TPI criteria in red.

Clicking on a particular site displays the total count of refrigeration cabinets failing to meet the TPI limit for that site. TPI facilitates predictive maintenance and helps save energy by flagging equipment issues.



Advanced Service Bundles

Ranging from basic to advanced, ActiveFM's service bundles include different features to satisfy different requirements. A more advanced ActiveFM service bundle includes the option to enlist RDM's Technical Incident Handlers, operating 24/7/365 at RDM's head office.

Incoming warnings and alarms are triaged electronically to highlight critical issues and minimise 'nuisance' alarms which are not urgent or may quickly recover to normal conditions on their own. Clients are alerted if pre-defined alarm conditions are met.

INDIVIDUAL SERVICE BUNDLE FEATURES

FEATURE	SPECIFICATION	W1	W2	W2+	W3	W4
WebReporter	Web based reporting and management dashboard presenting real-time data from across your estate.	●	●	●	●	●
Alarm Forwarding	Alerts via email or Telegram app when alarm is triggered. Designed for systems that do not include RDM (W4) or third-party (W3) Alarm Handler support.	●	●	●		
Front-End System Parameter & Time Clock Report	Daily report accessed via WebReporter highlighting any item and parameters that have changed.		●	●	●	●
Front-End Configuration & Store	Daily data capture of back-up configuration and TDB files from on-site RDM front-end system. These files are available for external download by a user.		●	●	●	●
Day/Night Alarm Management	Customisable alarm response depending on whether it's day or night time.			●	●	●
Controller Type Alarm Management*	User-defined alarm triage for each controller type.			●	●	●
Global Parameter Change*	User-defined global parameter changes applied across the estate.			●	●	●
Parameter Search*	Allows export of latest uploaded parameter settings for each site and controller.			●	●	●
WebFM2 License	Service management software used by either RDM or third-party Alarm Handlers.				●	●
Monitoring Team	Team of RDM Alarm Handlers available 24/7 to react and respond to alarms across clients' estates.					●
Dial-In Access (included by default)	Ability to access and view individual RDM front-end systems remotely.					●

OPTIONAL PLUGINS

FEATURE	SPECIFICATION	W1	W2	W2+	W3	W4
Dial-in Access	Ability to access and view individual Data Managers remotely.	●	●	●	●	
Temperature Data Retention (TDR)	Daily capture and storage of temperature data, alarm logs and parameter change data. Accessible via WebReporter.	●	●	●	●	●
Live Maps	Multi-site estate locations represented on an interactive map by pins. Pins change colour to highlight pre-alarm and alarm state.	●	●	●	●	●

ADDITIONAL STANDALONE PRODUCTS

FEATURE	SPECIFICATION	W1	W2	W2+	W3	W4
Kwheb	Web based dashboard presenting meter readings from on-site Data Managers. Compatible with a wide range of Gas, Water and Electricity.	●	●	●	●	●