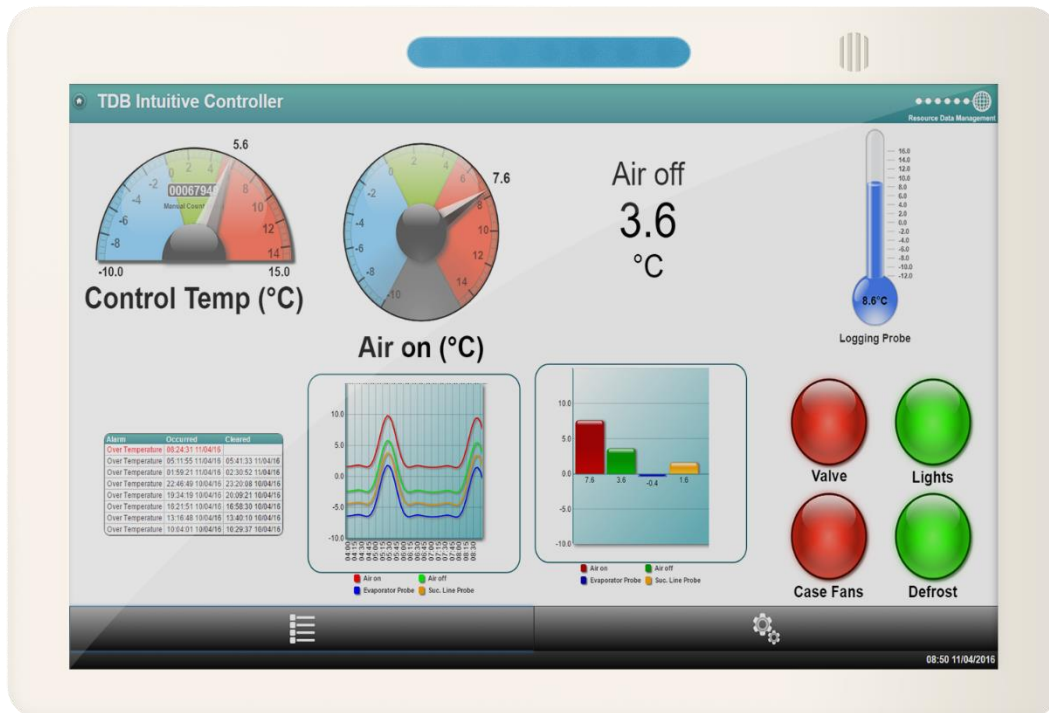


Resource
Data Management

TouchXL Intuitive & Plant Display

Commissioning Guide
Revision 1.0.3b



PR0617-XXX

Contents

On Site Use	3
Using the TouchXL Intuitive & Plant Display	3
Ordering Information	4
Ancillary Power Supply Products	4
Network Connections	5
USB	5
Ethernet	5
Fibre	7
Loss of Communications	7
Alarms	7
Operations from the "Home" screen	8
Service	8
Installation	10
Alarm Relay	10
Fibre Connection	10
Mounting Instructions	12
Back Mounting Bracket	12
Technical Specification	13
General	13
Power Requirements	13
Display	13
Touch Interface	13
Relay Specification	13
Revision History	14



Please ensure all power is switched off before installing or maintaining this product.

On Site Use

Using the TouchXL Intuitive & Plant Display



The TouchXL Display has no physical buttons or switches, all user interactions are carried out by pressing areas on the touchscreen similar to a mobile phone or tablet PC. The touchscreen should be operated using your finger and care should be taken not to apply excessive force as it could lead to damage. The TouchXL utilises a capacitive display technology and therefore objects such as pen nibs or screwdriver tips will not operate the display. Either a finger or a dedicated tool, such as a capacitive stylus pen, should be used when interacting with the TouchXL to provide the correct operation.

Each press of the display is accompanied by a click from the sounder. On some pages where lines of text are shown, such as the parameter list, the user can scroll down the page by running their finger from the bottom to the top of the list in the same manner as with a touchscreen enabled mobile telephone. During this motion your finger should remain in contact with the touch screen. Pinching the screen will also allow the user to zoom in or out.

For the TouchXL Intuitive Display to be utilised, it needs to be used with one of the following;

- Intuitive TDB with V3.2.0 or above
- Intuitive Circuit V3.9 or above
- Intuitive Super Pack V3.3 or above
- Intuitive Pack V4.3 or above

Note: The TouchXL Intuitive Display also can be supplied with fibre optic communications, please contact RDM Sales for more information.



Please ensure all power is switched off before installing or maintaining this product.

Ordering Information

When ordering a TouchXL Intuitive Display the following ordering scheme can be used to purchase the desired configuration.

PR0617 – X Y Z

X	Product Type
ID	TouchXL Intuitive Display

Y	Comms Type
E	Ethernet
F	Fibre

Z	Colour
WH	White
BK	Black

Example

To order a white TouchXL Intuitive Display with Ethernet communication would be

PR0617 – ID E WH

Ancillary Power Supply Products

The TouchXL Intuitive Display can be powered by either a 24Vdc power supply or by means of Power over Ethernet. These products and corresponding part numbers are listed below;

Part Number	Description
PR0618	0.63A 15W Din Rail Mountable 24V PSU
PR0619	TouchXL Power Over Ethernet (POE) Injector kit



Please ensure all power is switched off before installing or maintaining this product.

Network Connections

The TouchXL can connect to the Intuitive controllers by means of either USB, Ethernet or Fibre.

USB

A 2m USB lead will be provided with the display. It will be of the format USB A-type to micro-USB B. The USB A connector must be connected to one of the USB hosts on the Intuitive Controller, where the micro-USB B connector should be connected to the micro-USB port at the rear of the display. See [Installation](#) section for location details. The TouchXL will automatically configure itself to view the Intuitive Controller's Home screen.

Note: The maximum cable length that can be used is 3M. Longer cable lengths may affect the operations of the TouchXL. Any issues incurred using a cable length above 3M will not be covered under warranty.


Note: The USB connection provides no power to the unit and therefore a 24Vdc supply is required.

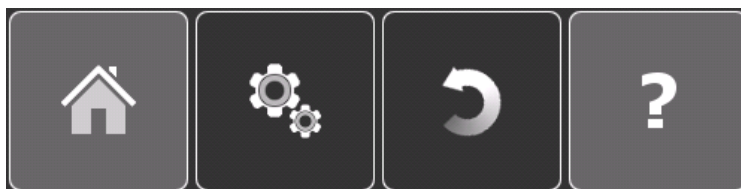
Ethernet

The TouchXL Intuitive Display has two (unless fibre is ordered) Ethernet ports. Ethernet port 2 can be utilised for Power over Ethernet (PoE) connections. Please consult the [Installation](#) section for location details of the ports.

The display can connect directly to the Intuitive Controller via Ethernet cable or by means of via a network switch (on the same subnet). Standard CAT5/5e/6 cable regulations apply.

For Ethernet connection, the IP address details of the Intuitive Controller must be known, as they require to be entered into the network configuration pages of the TouchXL. Therefore, upon powering up the TouchXL display, it will not automatically connect to the Intuitive Controller.

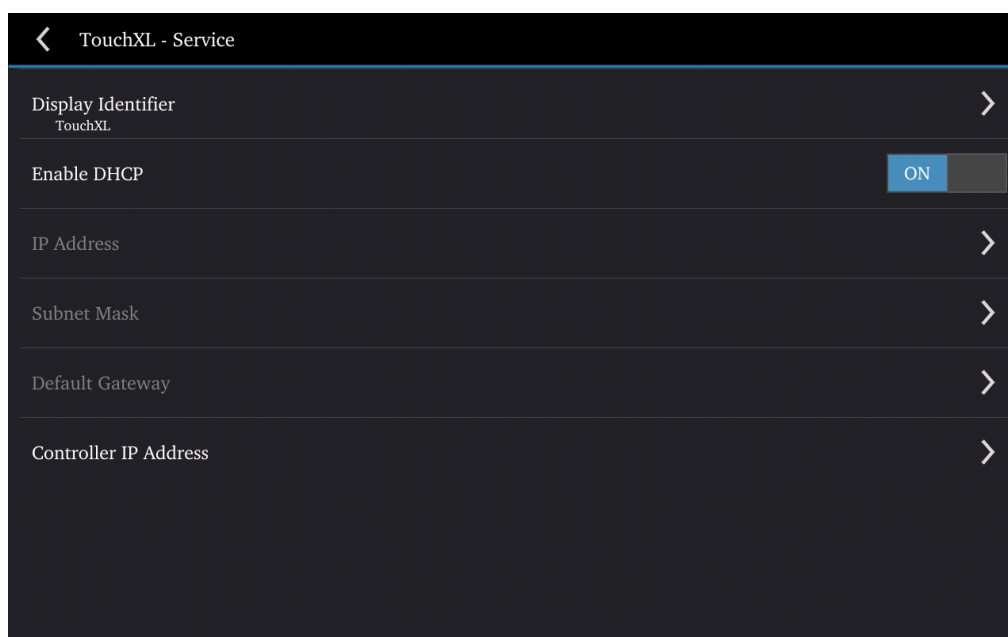
To enter the network configuration pages, first press the  symbol at the top left of the screen which will subsequently show the four menus/ symbols;



Pressing the 'cogs' will enter into the 'Service' menu. From there, enter 'Network Configuration';

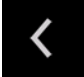


Please ensure all power is switched off before installing or maintaining this product.



The fields displayed will be the following;

Display Identifier	An alias to easily identify the individual TouchXLs, where more than one is connected to the same Intuitive Controller.
Enable DHCP	If enabled, it will accept an address handed out from a DHCP server on the network that it is connected to.
IP Address Subnet Mask Default Gateway	If not using DHCP, these options will be available and must be filled in for the TouchXL to communicate over the network to the Intuitive Controller. These details may need to be supplied by the local IT consultant.
Controller IP Address	This should be populated with the Intuitive Controller's IP address. Details of which can be found via the network configuration of the Intuitive's web interface.

Once the network configuration has been completed, press the  symbol (back button) located at the top left of the page. The TouchXL will detect any changes and automatically reboot. By connecting the TouchXL to the IP network using one of the Ethernet ports (please see [Installation](#) section for location), it will now be able to connect directly to the Intuitive Controller.

Note: The TouchXL Display permits the use of Power over Ethernet (PoE) on Ethernet port number 2, therefore with use of a PoE injector, the unit can be powered without the means of the 24Vdc power supply.



Please ensure all power is switched off before installing or maintaining this product.

Fibre

The hardware option of Fibre communications can be added when first ordering the TouchXL. When requested, Ethernet port 2 is replaced by the Fibre Optic Rx / Tx terminals. The network setup of the Fibre comms is the same of that for the Ethernet connection. Please see [installation](#) section for Specification details of fibre connections.

Note: The Fibre connection provides no power to the unit and therefore a 24Vdc supply is required.

Loss of Communications

If the TouchXL Intuitive Display loses connection or cannot detect the Intuitive Controller for longer than two minutes, the device will generate an alarm on screen and make an audible sound until it is muted/ accepted. The LED colour will change from blue to red until communications have been re-established.

Alarms

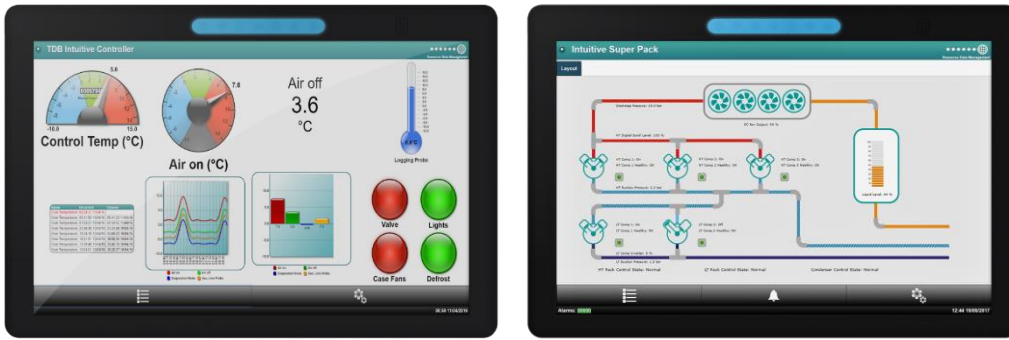
The TouchXL can communicate to different intuitive applications which in turn have their own types of alarms. If alarms are sent to the Intuitive Display they will be shown on screen and make an audible sound until they are muted/ accepted.

Under 'normal' conditions, where no alarms are present, the LED on the TouchXL will be blue. When the device (of which the screen is connected) signals an alarm, the LED will flash red until the alarm has been muted/ accepted. If the alarm is still present/ active and has been muted, the LED will remain a static red. The LED will only return to blue, once the alarm has cleared.



Please ensure all power is switched off before installing or maintaining this product.

Operations from the "Home" screen

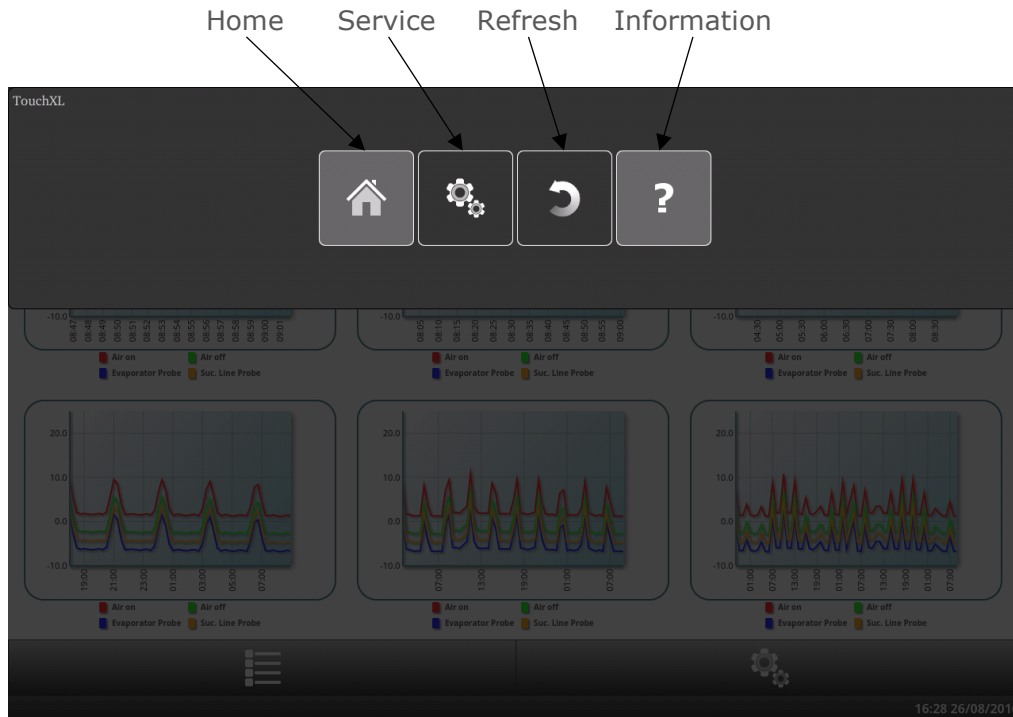


Once the TouchXL has been configured to communicate to the Intuitive Controller, the display will represent the identical interface to that of when viewing it using a typical web browser on a PC.

Most menus within the web interface to the Intuitive Controller are accessible via the touch display, therefore for details on all menus, please consult the relevant Intuitive documentation.

Service

To enter the TouchXL Intuitive Display service menus, press the (green) banner that runs along the top of the display screen. This will provide the following options;

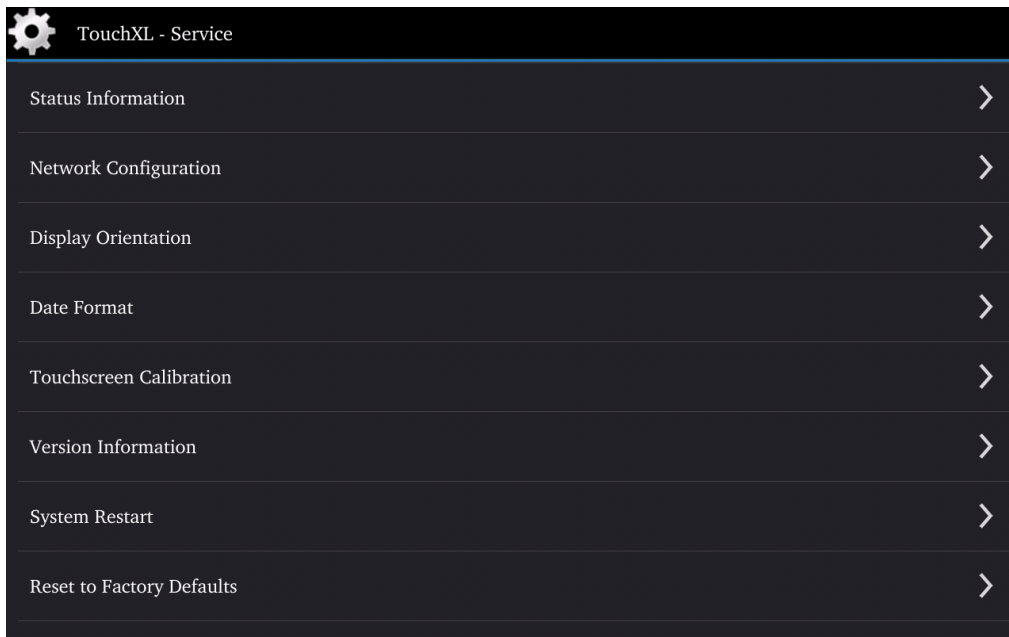


The 'Home' button will take the user to the device's home screen. The 'Refresh' button, restarts the browser the TouchXL uses and the 'Information' button, will give details on the unit relating to versions etc.

The 'Service' button will take the user into the service menus;



Please ensure all power is switched off before installing or maintaining this product.

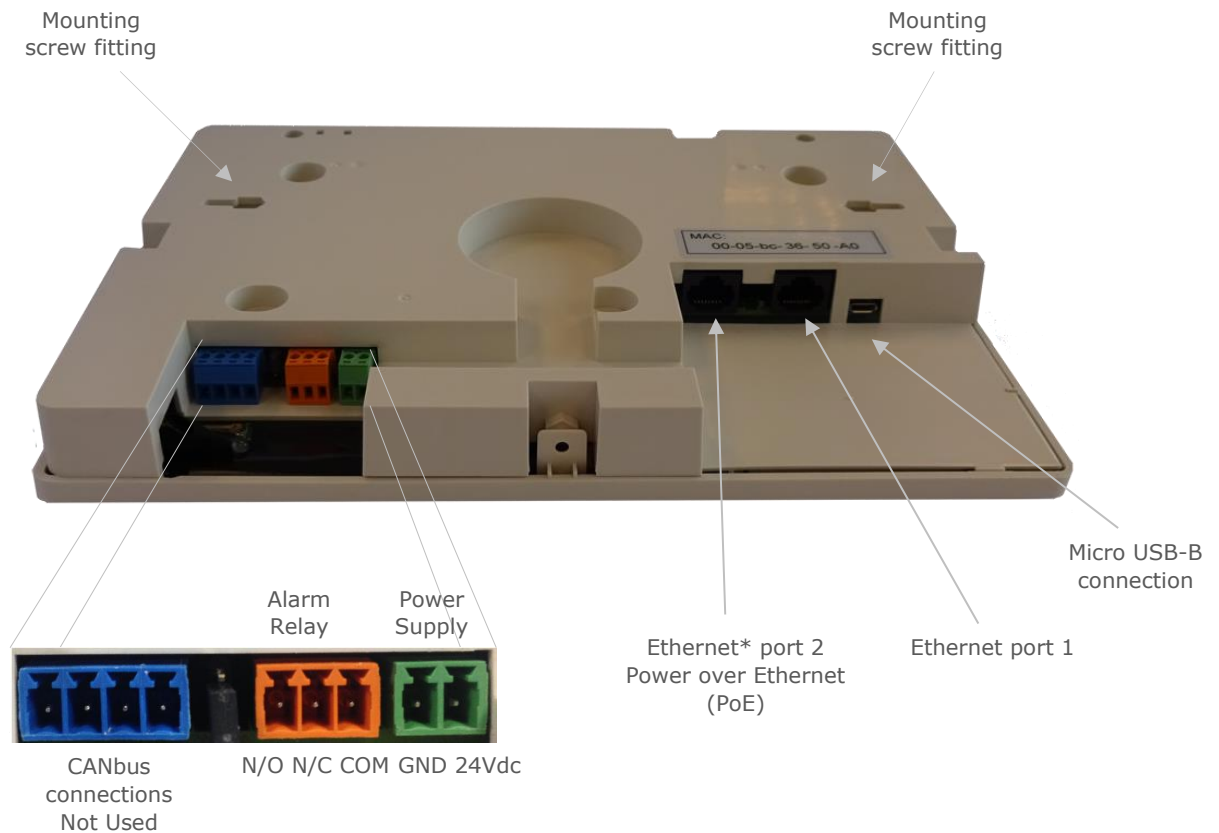


This screen gives the user access to upgrade software, date format, restart the TouchXL, calibrate the screen, set screen orientation, reset to factory defaults, view status and version information and also configure the [network](#) settings of the TouchXL Intuitive Display.



Please ensure all power is switched off before installing or maintaining this product.

Installation



*When ordered with the fibre connections, Ethernet port 2 will be replaced with the fibre optic terminals.

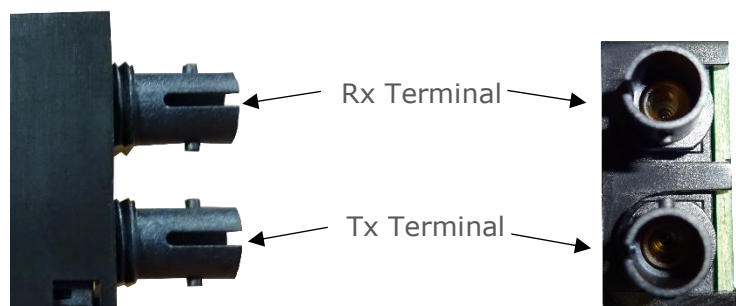
Alarm Relay

The alarm relay will be 'energised' for a healthy/ no alarm condition and 'de-energised' for an alarm condition.

Fibre Connection

The Fibre connection uses the ST Connector and uses a 1310nm Class 1 Laser*.

* Class 1 Laser safety IEC60825 compliant. Class 1 - This class is eye-safe under all operating conditions.



Please ensure all power is switched off before installing or maintaining this product.

- 125Mbps IEEE 802.3u 100Base-FX compliant.
- 125Mbps FDDI ISO/IEC 9314-1 compatible.
- Max length up to 2km on a multimode optical fibre.
- Can use 50/125-micron or 62.5/125-micron multimode fibre.
- Bend radius is dependent upon manufacturer, but a rule of thumb is 15x cable diameter.

Note: Fibre optic connectors and cables can be damaged from airborne particles, humidity and moisture, oils from the human body, and debris from the connectors they plug into. Always handle connectors and cables with care. Failure to do so may result in damage to the fibre optic connectors or cables. Before performing any maintenance, disconnect the fibre optic cables from the unit and turn off power. When disconnecting fibre optic cables, cover with the included dust caps to the ends to maintain their integrity. Before connecting fibre optic cables, clean the connector tips and in-line connectors.



Please ensure all power is switched off before installing or maintaining this product.

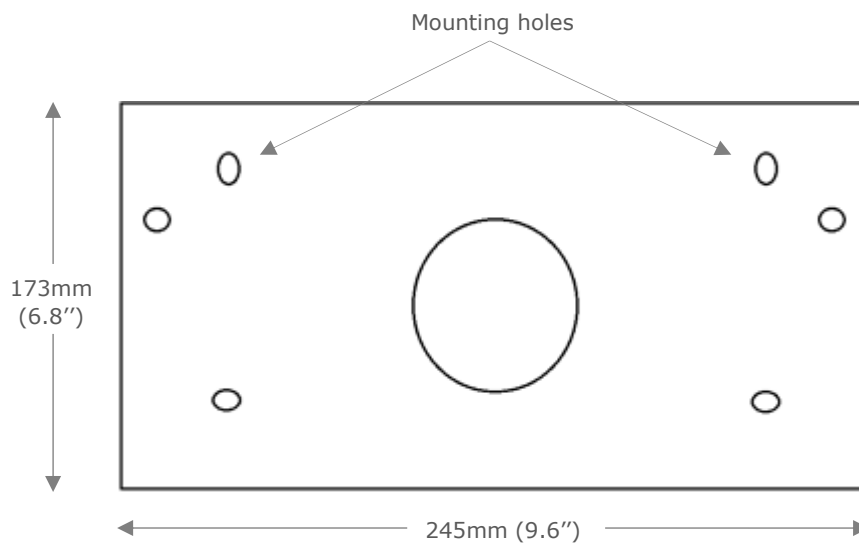
Mounting Instructions

The unit comes supplied with the appropriate connector blocks, two mounting screws with bolts and four screws to screw the back mounting bracket (see below)

To fit and attach the mounting bracket, do the following:

1. Insert the mounting screws into the fittings on the back of the display and slide them to the outside so that they are locked in.
2. Put the back cover on , making sure the screws are lined up with mounting holes (see below)
3. Once the cover is on, secure it in place by using the four screws around the outside edge of the display.
4. Mount in the desired position and use the two bolts supplied to secure into position.

Back Mounting Bracket



Please ensure all power is switched off before installing or maintaining this product.

Technical Specification

General

Operating temperature range	0°C to +50°C 32°F to +122°F
Operating Humidity	80% maximum
Storage temperature range	-10°C to +60°C 14°F to +140°F
Environmental	Indoor use at altitudes up to 2000m, Pollution Degree 1, Installation Category II.
Size (H x W x D)	173 x 245 x 31 mm 6.8 x 9.6 x 1.2 inches
Weight	0.73 Kg 1.6 lbs
EMC	EN61326-1: 2013, FCC CFR 47 Part 15b:2015
Ventilation	There is no requirement for forced cooling ventilation.
Disposal	Please observe local legislation with regards to electrical products.
Origins	Product designed in the UK manufactured in Taiwan.
IP Rating	40

Power Requirements

Supply Voltage Range	24Vdc, +/-10% 13W or PoE Class 0, 12.95W
----------------------	--

Display

Type	256mm (10.1") a-Si TN TFT Colour
Resolution	1280 x 800 (pixels)
Brightness	370 (cd/m ²)
Contrast Ratio	700:1
Viewing Angle	70°
Backlight	LED
Backlight Lifespan	15,000 hours

Touch Interface

Type	Type Balance Capacitive
Resolution	2200 x 3900 (dot)
Light Transmission	85% +/-5%

Relay Specification

Fixed on-board relay NO/NC	Volt Free. Max 2A resistive load 24Vac. 2A, 30Vdc
----------------------------	---

Note: The display is supplied with a Male USB A to Male Micro USB B Cable, 2m in length.



Please ensure all power is switched off before installing or maintaining this product.

Revision History

Date	Version	Update No	Changes
10/08/2016	1.0.0	01	First Release
19/09/2016	1.0.1	01	Update to cog icon
06/01/2017	1.0.2	01	Update to Backlight
Xx/03/2018	1.0.3	01	Update to LED states for alarm signals
17/11/2021	1.0.3	02	Reference to Supply frequency removed as DC only
14/06/2022	1.0.3a	01	IP Rating added
06/09/2023	1.0.3b	01	Note added regarding USB cable supplied



Please ensure all power is switched off before installing or maintaining this product.

Group Offices

RDM Group Head Office

80 Johnstone Avenue
Hillington Industrial Estate
Glasgow
G52 4NZ
United Kingdom

+44 (0)141 810 2828
support@resourcedm.com

RDM Inc

100 North Sixth Street
Suite 630B
Minneapolis, MN
55403
United States

+1 612 354 3923
usasupport@resourcedm.com

RDM Asia

Sky Park at One City
Jalan USJ 25/1
47650 Subang Jaya
Selangor
Malaysia

+603 5022 3188
info@rdmasia.com.my



Visit www.resourcedm.com/support for more information on RDM solutions, additional product documentation and software downloads.

While every effort is made to ensure the information given within this document is accurate, Resource Data Management Ltd shall not be liable for errors or omissions, for incidental or consequential damages, directly or indirectly, in connection with the furnishing, performance or misuse of this product or document. All specifications are subject to change without notice.

See www.resourcedm.com for terms and conditions of sales.

Copyright © Resource Data Management