

Resource  
Data Management

# Mercury 3 & Intuitive Mercury Monitor

Commissioning/User Guide  
Revision 3.2



PR0740-MON  
PR0750-MON  
PR0760-MON

## Contents

The Mercury 3 & Intuitive Mercury - 6 Input Monitor.....	4
Description .....	4
Variants .....	4
Ordering Information .....	4
Mercury Mk3 Hardware.....	4
Intuitive Mercury Hardware.....	4
Configuration .....	5
Compatible Network Interfaces .....	5
Front Display Features .....	6
Intuitive Mercury Network Expansion Options.....	6
Connections.....	7
Mercury Mk3 .....	7
Intuitive Mercury .....	7
Input and Output Allocation Tables .....	8
Input allocation table .....	8
Switched Resistor Values .....	8
Relay Output allocation table.....	8
Remote Relays .....	8
Setting up the controller.....	9
Setup through front buttons.....	9
Setup Function Menu (Common to all types) .....	9
Recommended set-up method.....	10
Rtc. Real time clock (This will automatically synchronise on network systems) .....	10
type. Set/view controller type .....	10
Unit. Set/view temperature unit and Probe type .....	10
ParA. Set/view parameters (This can be achieved at the network front end) .....	11
Parameter Tables .....	11
Parameter table for Probe Monitor and LT Probe Monitor (Types 1 & 3) .....	11
Parameter table for Probe Tester (Type 2) .....	13
Parameter Description .....	14
Network Configuration .....	15
Mercury Mk3 RS232 Variant& Intuitive Mercury .....	15
Bluetooth Network module.....	16
RS485 Legacy module / Intuitive Internal RS485 Network card .....	16
Mercury Mk3 – IP Variant .....	17
Normal Operation .....	17
Defrost (Type 1 only) .....	18
Defrost Over-run (Type 1 only) .....	18
Faults.....	18
Network .....	18
Probe Offset.....	18
Inhibit Alarms (Type 1 only) .....	18
Alarm Relay Action .....	18
Viewing I/O .....	18
Input / Output Table .....	19
Display Messages .....	20
Network Alarms.....	20
Probe Offset.....	20
Specification .....	21
Switched Resistor Example Wiring .....	22
Installation .....	22
Panel Cut-out and Clearance - Mercury Mk3 (Flush mount controller) .....	22
Fixing.....	22
Dimensions – Mercury Mk3 .....	22
Dimensions - Intuitive Mercury Controller .....	23



Please ensure all power is switched off before installing or maintaining this product.

---

Intuitive Mercury Mounting Instructions.....	23
Cleaning.....	23
Appendix 2: Webpage Appearance .....	24
Disclaimer.....	29
Revision History .....	29



Please ensure all power is switched off before installing or maintaining this product.

# The Mercury 3 & Intuitive Mercury - 6 Input Monitor

From Resource Data Management

## Description

The Mercury 3 & Intuitive Mercury Monitors have three controller types embedded in one controller. Type one is a 6-channel temperature monitor with defrost inputs to inhibit alarms. Each input can be configured for a temperature probe or plant fault (either N/C or N/O). Each channel can be independently configured for over and under temperature alarm set points as well as alarm and recovery delays. The Monitor can also be configured as a temperature probe tester, where the monitor simply records the values without generating alarms. The third type of controller can be used for monitoring in low temperature applications with over and under temperature alarm limits for each channel or be configured for plant faults (either N/C or N/O). The Monitor can operate stand-alone or be networked. There is a choice of serial or built in IP communications for logging onto a network.

The monitor supports PT1000, NTC2K, NTC470R, NTC700R, NTC3K, NTC2K25, NTC5K, NTC6K, NTC10K and NTC10K (2) temperature probes (Note: All 6 inputs must be the same type, they cannot be mixed).

Each input can be configured to have a temperature offset to compensate for long cable lengths.

## Variants

Description	Part Number
Mercury Mk3, 6 Channel Monitor	PR0740 MON*
Intuitive Mercury, 6 Channel Monitor	PR0760 MON*

\* See Ordering Information below for all available options

## Ordering Information

### Mercury Mk3 Hardware

When ordering a Mercury Mk3 controller the following ordering scheme can be used to purchase the desired hardware configuration.

#### PR0740 MXY MON

X	Description
D	Internal Display
R	Remote Display

Y	Description
IP	Ethernet Comms.
232	RS232 Comms.

#### Example:

To order a Mercury MK3 Monitor with an internal display and IP Comms: **PR0740 MDIP MON**

### Intuitive Mercury Hardware

When ordering a Mercury Intuitive controller the following ordering scheme can be used to purchase the desired hardware configuration.

#### PR07X0 Y MON Z

X	Description
5	Internal Display
6	Remote Display

Y	Description
Blank	Fused
NF	Non-Fused

Z	Description
Blank	RS232 Comms
IP	IP Comms
485	RS485 Comms

#### Example:

To order an Intuitive Mercury Monitor, non-Fused with a remote display and IP Comms: **PR0760 NF MON IP**



Please ensure all power is switched off before installing or maintaining this product.

## Configuration

The controller is delivered pre-configured as a Temperature Monitor (Type 1). The controller gives three configuration options. See [set-up](#) for changing the type.

Display value	Type description
1	6 channel temperature or fault monitor
2	6 channel probe tester
3	6 channel Low temperature monitor

## Compatible Network Interfaces

Mercury Mk3 controllers which do not have an IP interface built in are capable of connecting to either a TCP/IP local area network, an RS485 Genus compatible network or they can be used in standalone mode with no network output. To connect to a network you must add the correct communications module. Connecting to any of these communication modules will automatically be detected on power up and will affect the '[Net](#)' menu set up screens available to you. **Note** controllers with built in IP will be able to communicate to any IP switch, including the rear ports of the RDM Mercury Hub.

Description	Part Number
IP Futura (Single Mercury to IP Interface)	PR0016
RS485 Interface (Single Mercury to RS485 Interface)	PR0026
Mercury IP Switch (IP support for 10 controllers)	PR0018
Mercury IP Switch with Pressure/Humidity Inputs	PR0018-PHI
Intuitive Switch with 6 x RS232 ports, 4 x Ethernet Ports and a 4-20mA Pressure Transducer connection.	PR0758-6P4E-PHI
Intuitive Switch with 12 x RS232 ports and 4 x Ethernet Ports	PR0758-12P4E
Intuitive Switch with 12 x RS232 ports, 4 x Ethernet Ports and a 4-20mA Pressure Transducer connection.	PR0758-12P4E-PHI
Intuitive Switch with 16 x RS232 ports, 4 x Ethernet Ports and a 4-20mA Pressure Transducer connection.	PR0758-16P4E-PHI
Intuitive Switch with 16 x RS232 ports, 3 x Ethernet Ports and 1 x Fibre connection.	PR0757-16P3E-F
Intuitive Switch with 16 x RS232 ports, 3 x Ethernet Ports, 1 x Fibre connection and a 4-20mA Pressure Transducer connection.	PR0757-16P3E-F-PHI
Bluetooth RS232 Network Module	PR0630

The Intuitive Mercury Controller is supplied as standard with an internal RS232 network card, this allows connection to any of the above external network interfaces. Two alternative [internal network](#) cards are also available, these can be supplied factory fitted as an option or purchased separately as an interface kit.

Description	Part Number
Intuitive Internal IP Network Card Interface Kit	PR0770
Intuitive Internal RS485 Network Card Interface Kit	PR0771



Please ensure all power is switched off before installing or maintaining this product.

## Front Display Features

### LED's:

Valve (Not Used) 

Fans (Not Used) 

Lights (Not Used) 

Defrost (Relay 2) 

On-Line 

- Off No network attached
- Flashing Attempting to Log on to network
- Steady On-line

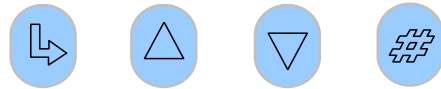
Service (Not Used) 

Alarm (Relay 1) 

HACCP (Not Used) 



### Keys



Enter Up Down Defrost

Note: Function keys illuminate when pressed, illumination is turned off 20 seconds after the key is used.

Defrost button is unused.

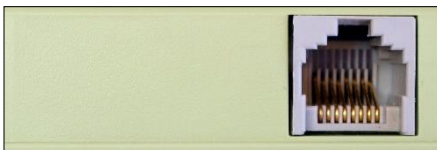
### Main Display



4 character LED display, used to display time and status messages.

## Intuitive Mercury Network Expansion Options

### RS232 Network Card (Default)



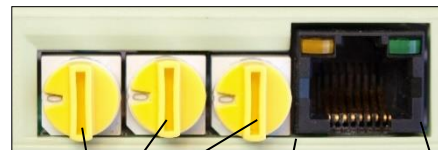
The Intuitive Mercury is supplied with an RS232 Network Card fitted as standard.

### RS485 Network Card (PR0771)



Ground B- A+ Network Activity LED  
Ground Screen

### IP Network Card (PR0770)



Rotary Address Switches Network Collision LED Network Activity LED

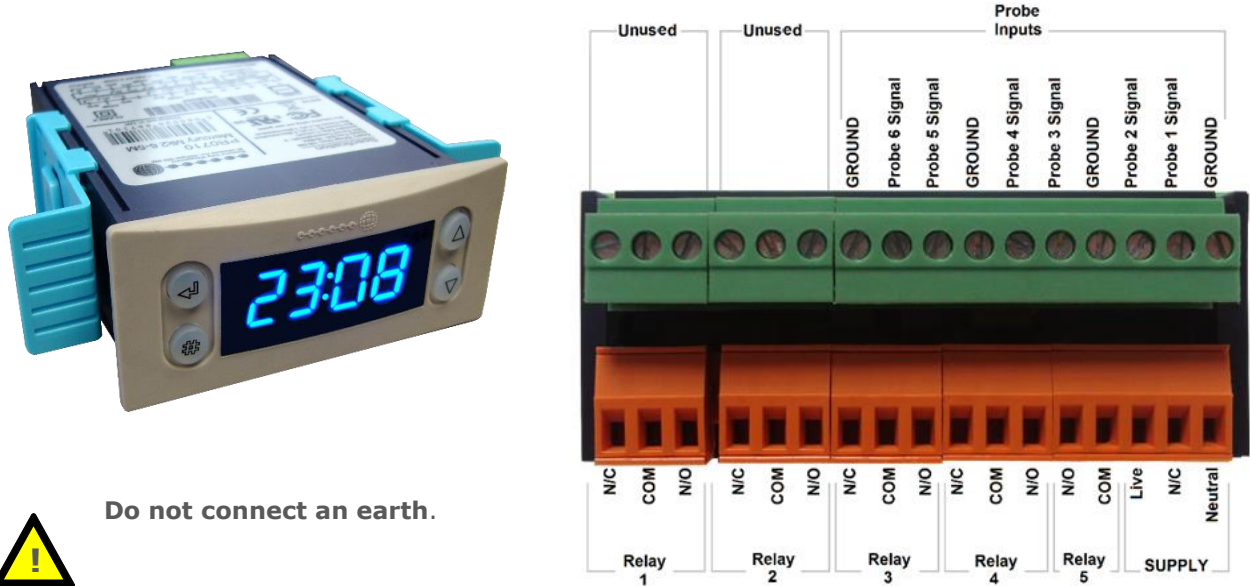


Please ensure all power is switched off before installing or maintaining this product.

## Connections

### Mercury Mk3

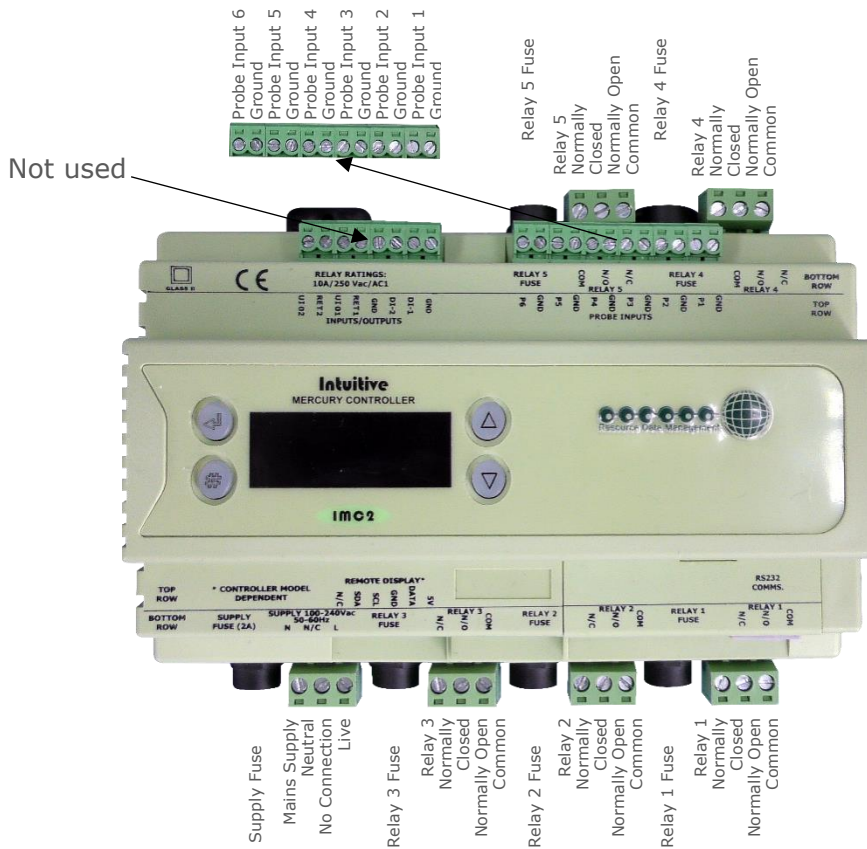
Input and Output connections are made to the back of the controller, the RS232 / Ethernet communication port is on the side. The diagram below shows the connection detail. Inputs and outputs are assigned according to the chosen configuration. See [Input/ Output](#) tables for further details on connections.



**Do not connect an earth.**

**Note:** On the supply, N/C equates to 'No Connection'

### Intuitive Mercury



**Do not connect an earth.**

**Note:** On the supply, N/C equates to 'No Connection'



Please ensure all power is switched off before installing or maintaining this product.

## Input and Output Allocation Tables

The following tables indicate; on a controller type basis, the functions of the inputs and outputs. Also shown are the defrost inputs that are derived by switching in a fixed value resistor across the input.

### Input allocation table

	Monitor Type 1	Probe Tester Type 2	LT Monitor Type 3	Alarm Action Type 1&3	Alarm Action Type 2	Plant Input Type 1 (Switched Resistors)	Plant Input Type 2 &3 (Switched Resistors)
Probe 1	Probe 1 or Plant Fault	Probe 1	Probe 1 or Plant Fault	Yes	N/A	Defrost Signal 1	N/A
Probe 2	Probe 2 or Plant Fault	Probe 2	Probe 2 or Plant Fault	Yes	N/A	Defrost Signal 2	N/A
Probe 3	Probe 3 or Plant Fault	Probe 3	Probe 3 or Plant Fault	Yes	N/A	Defrost Signal 3	N/A
Probe 4	Probe 4 or Plant Fault	Probe 4	Probe 4 or Plant Fault	Yes	N/A	Defrost Signal 4	N/A
Probe 5	Probe 5 or Plant Fault	Probe 5	Probe 5 or Plant Fault	Yes	N/A	Defrost Signal 5	N/A
Probe 6	Probe 6 or Plant Fault	Probe 6	Probe 6 or Plant Fault	Yes	N/A	Defrost Signal 6	N/A

### Switched Resistor Values

For PT1000 probes use 820 Ohm  
 For NTC2K, NTC2K25 and NTC3K probes use 590 Ohm  
 For NTC5K and NTC 6K probes use 1K Ohm  
 For NTC10k probes use 2K7 resistors  
 For NTC10 (2) probes use 2K Ohm

The resistors used must have a tolerance of 1% or better and the resistor must have a power rating of 0.25W. For improved accuracy whilst using switched resistors RDM recommend resistors with 0.1% accuracy are used. When a resistor is switched across the appropriate input it signals to the Mercury a defrost on that channel whilst still recording the probe temperature on the input.

### Relay Output allocation table

	Monitor Type 1	Probe Tester Type 2	LT Monitor Type 3	Relay Action Type 1 & 3	Relay Action Type 2
Relay 1	Alarm*	Not Used	Alarm*	Output OK = Relay Energised	Not Used
Relay 2	Any Channel On Defrost	Not Used	Remote Relay 1	Output Off = Relay Energised	Not Used
Relay 3	Remote Relay 1	Not Used	Remote Relay 2	Output Off = Relay Energised	Not Used
Relay 4	Remote Relay 2	Not Used	Remote Relay 3	Output Off = Relay De Energised	Not Used
Relay 5	Remote Relay 3	Not Used	Remote Relay 4	Output Off = Relay De Energised	Not Used

\*The alarm relay is energised for no alarm. Use the NC and Common for "Loop make" on alarm or use the NO and Common for "Loop break" on alarm

## Remote Relays

Relays outlined as 'Remote relay' can be used as remote relays by the Data Builder and GP Timer. Refer to the appropriate guide for further information. Text strings for remote relay use:

Relay	Use text string (Data Builder)	Gp Timer (General) Output Channel
1	NA	0
2	Remote relay ?	1
3	Remote relay ?	2
4	Remote relay ?	3
5	Remote relay ?	4

Where '?' is determined by the controller type selected as per the [Relay Output](#) Table above.



Please ensure all power is switched off before installing or maintaining this product.

## Setting up the controller

Access to the controller can be achieved several ways

- Through the front mounted buttons
- Direct access by PC or palm top into the rear comms port. This requires a software package available on the RDM website
- Through the RDM Data Manager.
- Across an IP network. (Current controller IP address required)

### Setup through front buttons



To enter setup mode, hold the Enter and Down buttons together for approximately 3 seconds until the message "Ent" appears on the display. Now press the Enter button again to enter the function menu. IO will be displayed. Scroll up or down to go through the list.

### Setup Function Menu (Common to all types)

Display	Option	Explained in Paragraph	Display	Option	Explained in Paragraph
IO	View Inputs / Outputs and States	<a href="#">Input / output table</a>	inh1	Inhibit Channel 1*	<a href="#">Inhibit channel</a>
PARA	Set/View Parameters	<a href="#">Set view parameters</a>	inh2	Inhibit Channel 2*	<a href="#">Inhibit channel</a>
Unit	Probe type and Celsius/Fahrenheit option	<a href="#">Set View Unit</a>	inh3	Inhibit Channel 3*	<a href="#">Inhibit channel</a>
tyPE	Set/View Controller Type	<a href="#">Set/view controller type</a>	inh4	Inhibit Channel 4*	<a href="#">Inhibit channel</a>
Rtc	Set/view Clock (rtc = Real Time Clock)	<a href="#">Real Time Clock</a>	inh5	Inhibit Channel 5*	<a href="#">Inhibit channel</a>
nEt	Set/view network configuration	<a href="#">Network Configuration</a>	inh6	Inhibit Channel 6*	<a href="#">Inhibit channel</a>
SoFt	View software version		tEst**	See Note Below	Test Mode
OFSt	Probe Offset	<a href="#">Probe Offset</a>	ESC	Exit Setup mode	

**\*Note:** Inhibit function available in type 2 only.

**\*\*Note:** When first powered up the controller will have the 'tEst' option in the menu setup. This allows the user to toggle the relays for testing purposes. Upon entering the menu, the display will show r-01 (relay 1) to r-05 (relay 5), select the desired output and toggle the value from 0 to 1 (confirm by pressing enter) to switch the selected relay.

This option is only available for 30 seconds after power up. After this time, the menu setup will return to its standard options.



Please ensure all power is switched off before installing or maintaining this product.

## Recommended set-up method

If you are not connecting to a network and want to set up the controller through the buttons we recommend you use the following order from the function menu.

### Rtc. Real time clock (This will automatically synchronise on network systems)

- Use the up or down buttons to scroll through the display until the display reads "rtc"
- Press enter. The display will show "t-1". Press enter again
- Scroll hours up or down (0 – 23) press enter
- Use up button to select "t-2", press enter
- Scroll minutes up or down (0 – 59) press enter
- Repeat for t-3 (seconds 0 – 59)
- Repeat for t -4 (days up to 31)
- Repeat for t -5 (months up to 12)
- Repeat for t -6 (year up to 99)
- Use up button to display "ESC", press enter to display "rtc"

**Time clock is now set**

### type. Set/view controller type

- From the function menu scroll to select type, press enter
- Use the up/down buttons to scroll through case/coldroom configuration types. (see [configuration table on page 4](#))
- Press enter.
- Scroll to select "ESC"
- Press enter

**Controller type configuration is now set**

### Unit. Set/view temperature unit and Probe type

From the function menu scroll to select Unit  
Press enter and the value will be displayed: -

Change the probe type to: -	Type 1 & 2	Type 3
0 = PT1000°C	Range -42.0 to 128.0 °C	Range -98.0 to 128.0 °C
1 = PT1000°F	Range -43.6 to 262.4 °F	Range -144.4 to 262.4 °F
2 = NTC2K °C	Range -42.0 to 60.0 °C	Range -98.0 to 106.0 °C
3 = NTC2K °F	Range -43.6 to 140.0 °F	Range -144.4 to 223.0 °F
4 = NTC470R °C	Range -42.0 to 45.0 °C	Range -98.0 to 45.0 °C
5 = NTC470R °F	Range -43.6 to 114.0 °F	Range -144.4 to 114.0 °F
6 = NTC700R °C	Range -42.0 to 60.0 °C	Range -42.0 to 60.0 °C
7 = NTC700R °F	Range -43.6 to 140.0 °F	Range -41.1 to 140.0 °F
8 = NTC3K °C	Range -42.0 to 60.0 °C	Range -98.0 to 100.0 °C
9 = NTC3K °F	Range -43.6 to 140.0 °F	Range -144.4 to 212.0 °F
10 = NTC2K25 °C	Range -42.0 to 58 °C	Range -98.0 to 90.0 °C
11 = NTC2K25 °F	Range -43.6 to 136.3 °F	Range -144.0 To 194.0 °F
12 = NTC5K °C	Range -42.0 to 60.0 °C	Range -98.0 to 118.0 °C
13 = NTC5K °F	Range -43.6 to 140.0 °F	Range -144.0 to 245.0 °F
14 = NTC6K °C	Range -42.0 to 60.0 °C	Range -98.0 to 125.0 °C
15 = NTC6K °F	Range -43.6 to 140.0 °F	Range -144.0 to 258.0 °F
16 = NTC10K °C	Range -42.0 to 60.0 °C	Range -98.0 to 128.0 °C
17 = NTC10K °F	Range -43.6 to 140.0 °F	Range -144.0 To 262.4 °F
18 = NTC10K(2) °C	Range -42.0 to 60.0°C	Range -85.6 to 128.0 °C
19 = NTC10K(2) °F	Range -43.6 to 140.0 °F	Range -122.2 to 262.4 °F



Please ensure all power is switched off before installing or maintaining this product.

## ParA. Set/view parameters (This can be achieved at the network front end)

- a. From the function menu scroll to select ParA
- b. Pressing Enter while ParA is displayed will enter the parameter menu. The first parameter option will be displayed as P-01. Pressing the Up or Down button will present the other parameter options P-02, P-03 etc. See the parameter list below to find what parameter number corresponds to which actual parameter. Pressing the Enter button will show the current value of the selected parameter. Press Up or Down to modify the value and press Enter again to save the value. The parameter list number will be displayed again. Two other options are present in the parameter menu – dFLt and ESC. Selecting ESC will exit setup mode. Selecting dFLt will reset all parameters back to the default values for the current type of controller.

## Parameter Tables

### Parameter table for Probe Monitor and LT Probe Monitor (Types 1 & 3)

Not all parameters apply to all controller types, for example P-08 is Channel 1 Defrost Over-run which only applies to Monitor type 1, this parameter will not appear if the controller is set up as a type 3 (Low temperature monitor). In the following table, the type columns on the right hand side will be greyed out if that parameter does not apply to that controller type.

Number	Parameter	Range °C( °F )	Step	Units	Default °C( °F )	Type 1	Type 3
P-01	Channel 1 Select	0 = Off 1 = Probe 2 = Plant N/C 3 =Plant N/O			1	✓	✓
P-02	C1 Slug Probe	0 = No 1 =Yes			0	✓	✓
P-03	Channel 1 UT	-42.0 – 128.0°C (-43.6 – 262.4°F)	0.1	Deg	-2.0 (28.4)	✓	
	Channel 1 UT	-98.0 – 128.0°C (-144.4 – 262.4°F)	0.1	Deg	-2.0 (28.4)		✓
P-04	Channel 1 OT	-42.0 – 128.0°C (-43.6 – 262.4°F)	0.1	Deg	5.0 (41.0)	✓	
	Channel 1 OT	-98.0 – 128.0°C (-144.4 – 262.4°F)	0.1	Deg	5.0 (41.0)		✓
P-05	C1 Alarm Delay	00:00 to 99:00	01:00	mm:ss	20:00	✓	✓
P-06	C1 Recovery	00:00 to 99:00	01:00	mm:ss	20:00	✓	
P-07	C1 Inhibit	00:00 to 99:00	01:00	mm:ss	30:00	✓	
P-08	C1 Defrost Over-run	00:00 to 99:00	01:00	mm:ss	60:00	✓	
P-11	Channel 2 Select	0 = Off 1 = Probe 2 = Plant N/C 3 = Plant N/O			1	✓	✓
P-12	C2 Slug Probe	0 = No 1 = Yes			0	✓	✓
P-13	Channel 2 UT	-42.0 – 128.0°C (-43.6 – 262.4°F)	0.1	Deg	-2.0 (28.4)	✓	
	Channel 2 UT	-98.0 – 128.0°C (-144.4 – 262.4°F)	0.1	Deg	-2.0 (28.4)		✓
P-14	Channel 2 OT	-42.0 – 128.0°C (-43.6 – 262.4°F)	0.1	Deg	5.0 (41.0)	✓	
	Channel 2 OT	-98.0 – 128.0°C (-144.4 – 262.4°F)	0.1	Deg	5.0 (41.0)		✓
P-15	C2 Alarm Delay	00:00 to 99:00	01:00	mm:ss	20:00	✓	✓
P-16	C2 Recovery	00:00 to 99:00	01:00	mm:ss	20:00	✓	
P-17	C2 Inhibit	00:00 to 99:00	01:00	mm:ss	30:00	✓	
P-18	C2 Defrost Over-run	00:00 to 99:00	01:00	mm:ss	60:00	✓	



Please ensure all power is switched off before installing or maintaining this product.

Number	Parameter	Range °C( °F )	Step	Units	Default °C( °F )	Type 1	Type 3
P-21	Channel 3 Select	0 = Off 1 = Probe 2 = Plant N/C 3 = Plant N/O			1	✓	✓
P-22	C3 Slug Probe	0 = No 1 = Yes			0	✓	✓
P-23	Channel 3 UT	-42.0 – 128.0°C (-43.6 – 262.4°F)	0.1	Deg	-2.0 (28.4)	✓	
	Channel 3 UT	-98.0 – 128.0°C (-144.4 – 262.4°F)	0.1	Deg	-2.0 (28.4)		✓
P-24	Channel 3 OT	-42.0 – 128.0°C (-43.6 – 262.4°F)	0.1	Deg	5.0 (41.0)	✓	
	Channel 3 OT	-98.0 – 128.0°C (-144.4 – 262.4°F)	0.1	Deg	5.0 (41.0)		✓
P-25	C3 Alarm Delay	00:00 to 99:00	01:00	mm:ss	20:00	✓	✓
P-26	C3 Recovery	00:00 to 99:00	01:00	mm:ss	20:00	✓	
P-27	C3 Inhibit	00:00 to 99:00	01:00	mm:ss	30:00	✓	
P-28	C3 Defrost Over-run	00:00 to 99:00	01:00	mm:ss	60:00	✓	
P-31	Channel 4 Select	0 = Off 1 = Probe 2 = Plant N/C 3 = Plant N/O			1	✓	✓
P-32	C4 Slug Probe	0 = No 1 = Yes			0	✓	✓
P-33	Channel 4 UT	-42.0 – 128.0°C (-43.6 – 262.4°F)	0.1	Deg	-2.0 (28.4)	✓	
	Channel 4 UT	-98.0 – 128.0°C (-144.4 – 262.4°F)	0.1	Deg	-2.0 (28.4)		✓
P-34	Channel 4 OT	-42.0 – 128.0°C (-43.6 – 262.4°F)	0.1	Deg	5.0 (41.0)	✓	
	Channel 4 OT	-98.0 – 128.0°C (-144.4 – 262.4°F)	0.1	Deg	5.0 (41.0)		✓
P-35	C4 Alarm Delay	00:00 to 99:00	01:00	mm:ss	20:00	✓	✓
P-36	C4 Recovery	00:00 to 99:00	01:00	mm:ss	20:00	✓	
P-37	C4 Inhibit	00:00 to 99:00	01:00	mm:ss	30:00	✓	
P-38	C4 Defrost Over-run	00:00 to 99:00	01:00	mm:ss	60:00	✓	
P-41	Channel 5 Select	0 = Off 1 = Probe 2 = Plant N/C 3 = Plant N/O			1	✓	✓
P-42	C5 Slug Probe	0 = No 1 = Yes			0	✓	✓
P-43	Channel 5 UT	-42.0 – 128.0°C (-43.6 – 262.4°F)	0.1	Deg	-2.0 (28.4)	✓	
	Channel 5 UT	-98.0 – 128.0°C (-144.4 – 262.4°F)	0.1	Deg	-2.0 (28.4)		✓
P-44	Channel 5 OT	-42.0 – 128.0°C (-43.6 – 262.4°F)	0.1	Deg	5.0 (41.0)	✓	
	Channel 5 OT	-98.0 – 128.0°C (-144.4 – 262.4°F)	0.1	Deg	5.0 (41.0)		✓
P-45	C5 Alarm Delay	00:00 to 99:00	01:00	mm:ss	20:00	✓	✓
P-46	C5 Recovery	00:00 to 99:00	01:00	mm:ss	20:00	✓	
P-47	C5 Inhibit	00:00 to 99:00	01:00	mm:ss	30:00	✓	
P-48	C5 Defrost Over-run	00:00 to 99:00	01:00	mm:ss	60:00	✓	
P-51	Channel 6 Select	0 = Off 1 = Probe 2 = Plant N/C			1	✓	✓



Please ensure all power is switched off before installing or maintaining this product.

Number	Parameter	Range °C( °F )	Step	Units	Default °C( °F )	Type 1	Type 3
		3 = Plant N/O					
P-52	C6 Slug Probe	0 = No 1 = Yes			0	✓	✓
P-53	Channel 6 UT	-42.0 – 128.0°C (-43.6 – 262.4°F)	0.1	Deg	-2.0 (28.4)	✓	
	Channel 6 UT	-98.0 – 128.0°C (-144.4 – 262.4°F)	0.1	Deg	-2.0 (28.4)		✓
P-54	Channel 6 OT	-42.0 – 128.0°C (-43.6 – 262.4°F)	0.1	Deg	5.0 (41.0)	✓	
	Channel 6 OT	-98.0 – 128.0°C (-144.4 – 262.4°F)	0.1	Deg	5.0 (41.0)		✓
P-55	C6 Alarm Delay	00:00 to 99:00	01:00	mm:ss	20:00	✓	✓
P-56	C6 Recovery	00:00 to 99:00	01:00	mm:ss	20:00	✓	
P-57	C6 Inhibit	00:00 to 99:00	01:00	mm:ss	30:00	✓	
P-58	C6 Defrost Over-run	00:00 to 99:00	01:00	mm:ss	60:00	✓	
dflt							

### Parameter table for Probe Tester (Type 2)

Number	Parameter	Range	Step	Units	Default
P-81	Channel 1 select	0 (Off), 1 (ON)			1
P-82	Channel 2 select	0 (Off), 1 (ON)			1
P-83	Channel 3 select	0 (Off), 1 (ON)			1
P-84	Channel 4 select	0 (Off), 1 (ON)			1
P-85	Channel 5 select	0 (Off), 1 (ON)			1
P-86	Channel 6 select	0 (Off), 1 (ON)			1



Please ensure all power is switched off before installing or maintaining this product.

## Parameter Description

Number	Parameter	Description
P-01	Channel 1 Select	0 = Channel not used. 1 = Temperature probe 2 = No 0 volt return = alarm. 3 = 0 volt return = alarm
P-02	C1 Slug Probe	Electronic slugging
P-03	Channel 1 UT	Under temperature alarm
P-04	Channel 1 OT	Over temperature alarm
P-05	C1 Alarm Delay	Alarm delay period
P-06	C1 Recovery	<a href="#">Defrost recovery period</a>
P-07	C1 Inhibit	<a href="#">Inhibit alarms</a>
P-08	C1 Defrost Over-run	<a href="#">Defrost Over-run</a>
P-11	Channel 2 Select	0 = Channel not used. 1 = Temperature probe 2 = No 0 volt return = alarm. 3 = 0 volt return = alarm
P-12	C2 Slug Probe	Electronic slugging
P-13	Channel 2 UT	Under temperature alarm
P-14	Channel 2 OT	Over temperature alarm
P-15	C2 Alarm Delay	Alarm delay period
P-16	C2 Recovery	<a href="#">Defrost recovery period</a>
P-17	C2 Inhibit	<a href="#">Inhibit alarms</a>
P-18	C2 Defrost Over-run	<a href="#">Defrost Over-run</a>
P-21	Channel 3 Select	0 = Channel not used. 1 = Temperature probe 2 = No 0 volt return = alarm. 3 = 0 volt return = alarm
P-22	C3 Slug Probe	Electronic slugging
P-23	Channel 3 UT	Under temperature alarm
P-24	Channel 3 OT	Over temperature alarm
P-25	C3 Alarm Delay	Alarm delay period
P-26	C3 Recovery	<a href="#">Defrost recovery period</a>
P-27	C3 Inhibit	<a href="#">Inhibit alarms</a>
P-28	C3 Defrost Over-run	<a href="#">Defrost Over-run</a>
P-31	Channel 4 Select	0 = Channel not used. 1 = Temperature probe 2 = No 0 volt return = alarm. 3 = 0 volt return = alarm
P-32	C4 Slug Probe	Electronic slugging
P-33	Channel 4 UT	Under temperature alarm
P-34	Channel 4 OT	Over temperature alarm
P-35	C4 Alarm Delay	Alarm delay period
P-36	C4 Recovery	<a href="#">Defrost recovery period</a>
P-37	C4 Inhibit	<a href="#">Inhibit alarms</a>
P-38	C4 Defrost Over-run	<a href="#">Defrost Over-run</a>
P-41	Channel 5 Select	0 = Channel not used. 1 = Temperature probe 2 = No 0 volt return = alarm. 3 = 0 volt return = alarm
P-42	C5 Slug Probe	Electronic slugging
P-43	Channel 5 UT	Under temperature alarm
P-44	Channel 5 OT	Over temperature alarm
P-45	C5 Alarm Delay	Alarm delay period
P-46	C5 Recovery	<a href="#">Defrost recovery period</a>
P-47	C5 Inhibit	<a href="#">Inhibit alarms</a>
P-48	C5 Defrost Over-run	<a href="#">Defrost Over-run</a>
P-51	Channel 6 Select	0 = Channel not used. 1 = Temperature probe 2 = No 0 volt return = alarm. 3 = 0 volt return = alarm
P-52	C6 Slug Probe	Electronic slugging
P-53	Channel 6 UT	Under temperature alarm
P-54	Channel 6 OT	Over temperature alarm
P-55	C6 Alarm Delay	Alarm delay period
P-56	C6 Recovery	<a href="#">Defrost recovery period</a>
P-57	C6 Inhibit	<a href="#">Inhibit alarms</a>
P-58	C6 Defrost Over-run	<a href="#">Defrost Over-run</a>



Please ensure all power is switched off before installing or maintaining this product.

## Network Configuration

The final section to setup is the network address. In all instances, this must be done before the controller is plugged into the site network.

For the Mercury Mk3 there are two standard hardware variants; [RS232](#) interface or built in [IP](#) (See [Ordering details](#) for more information).

When using an Intuitive Mercury controller, the controller has to have the correct network card fitted (see [compatible network interfaces](#)). For connection to a Mercury Switch (Hub) or an IP Futura network interface, the standard fitment RS232 network card is utilised.

### Mercury Mk3 RS232 Variant & Intuitive Mercury

When logging a Mercury Mk3 with an RS232 interface onto a network you must first connect the controller to a communications module, this is either a 485 Legacy, IP Futura, Mercury Switch or Bluetooth network module.

### IP Futura module & Intuitive Internal IP Network card

In an IP system there are two options,

- IP-L – setting rotary address of module to 000
- IP-r – setting rotary address of module to a unique number that is not 000

IP-L allows the user to statically assign an IP address in the controller which could be used, for example, when connecting the controllers onto a customer's local area network that does not use DHCP.

IP-r allows the network ID (rotary switch address) to be used by a system running a DHCP server (for example the RDM Data Manager) to issue out an IP address automatically.

#### IP-L

To configure the communication module or network card for IP-L, set all three rotary switches to zero. The module should then be connected to the controller. In the case of an Intuitive Mercury controller where the network card is already fitted, the controller should be powered off, all three rotary switches set to zero and the controller powered on.

- From within the device's display navigate to the 'nEt' menu and press the 'enter' key.
- 'IP-L' will be displayed, press enter again.
- The user can now set the address using the table below

Display	Option
IP-1	IP Address byte 1
IP-2	IP Address byte 2
IP-3	IP Address byte 3
IP-4	IP Address byte 4
nL	Network Mask Length (see the network mask length table above)
gt-1	Gateway Address byte 1
gt-2	Gateway Address byte 2
gt-3	Gateway Address byte 3
gt-4	Gateway Address byte 4
ESC	Exit network menu. <b>N.B.</b> this option <b>must</b> be selected to save any changes made in this menu

To ease setup, a single network mask length value is used. If the address has been specified with a network mask value in dotted IP format e.g. 255.255.255.0 then the table below gives the conversion:

Mask	Length	Mask	Length	Mask	Length
		255.255.254.0	23	255.254.0.0	15
255.255.255.252	30	255.255.252.0	22	255.252.0.0	14
255.255.255.248	29	255.255.248.0	21	255.248.0.0	13
255.255.255.240	28	255.255.240.0	20	255.240.0.0	12
255.255.255.224	27	255.255.224.0	19	255.224.0.0	11
255.255.255.192	26	255.255.192.0	18	255.192.0.0	10
255.255.255.128	25	255.255.128.0	17	255.128.0.0	09
255.255.255.0	24	255.255.0.0	16	255.0.0.0	08



Please ensure all power is switched off before installing or maintaining this product.

## IP-r

To configure the communication module for IP-r, set the three rotary switches to give each controller a unique identifier. The module should then be connected to the controller and the network. In the case of an Intuitive Mercury controller where the network card is already fitted, the three rotary switches must be set when the controller is powered off, then power up before connecting to the network. To view the issued IP address from the DHCP server;

- Select 'nEt' from the function menu and press the 'Enter' key.
- 'IP-r' will be shown, press enter again
- Similar to the [tables](#) above, the network details can be viewed.

## Mercury Switch

A similar process to that of the [IP Futura](#) can be used with the Mercury Switch. Please refer to the Mercury Switch user guide, which can be obtained from the RDM website, for information regarding connecting a controller to a network.

## Bluetooth Network module

Connecting a Bluetooth Network Module to the controller will update the screens available under the 'Net' menu. They are detailed below;

Display	Option
485t	1: 485 Genus Network (See <a href="#">RS485 module/ Intuitive Internal RS485 Network card</a> ) 2: Bluetooth
485A	Bluetooth device name. As it will appear on DMTouch's device list (RC00-0 – RC99-9)
nI d	Select Bluetooth Network ID (0 – 4)
gAdd	Shows underlying network address assigned to controller
rLog	Re-log the controller back onto the network
ClrA	Clear the address/ name from the controller
ESC	Exit network menu. <b>Note:</b> this option <b>must</b> be selected to save any changes made in this menu.

- Ensure the 485t is set to '2' (Bluetooth)
- Provide a unique device alias under the 485A menu (e.g. 01-5)
- Select the Network ID. Please see the Bluetooth wireless mesh setup guide for more details.
- Press the 'ESC' to save

The green network LED will flash to show it is attempting to log on and go solid when connected.

## RS485 Legacy module / Intuitive Internal RS485 Network card

Connecting an RS485 legacy Module or an Intuitive Internal RS485 network card to the controller will govern which set up screens are made available. Both modules support the "Genus" protocol only.

Display	Option
485t	1: 485 Genus Network 2: Bluetooth (See <a href="#">Bluetooth Network module</a> )
485A	485 Address/Name
gAdd	Show underlying network address assigned to controller
rLog	Re-log the controller back onto the network
CLrA	Clear the address/name from the controller
ESC	Exit network menu. <b>N.B.</b> this option <b>must</b> be selected to save any changes made in this menu



Please ensure all power is switched off before installing or maintaining this product.

## Mercury Mk3 – IP Variant

When logging a Mercury Mk3 with an in-built IP interface it be connected directly into an IP network without the need of a communications module.

When networking the Ethernet variant, the 'Net' menu will have the following menus:

Display	Option
IP-L / IP-r	Read/ Write Static IP address / Read Only DHCP IP address
Id	The 3 digit network address
AtyP	IP-r / IP-L selection
ESC	Exit Menu

Similar to the **setup**, IP-L allows you to fix a static IP address into the controller and IP-r allows you to give each controller on the system a unique network number (using the Id).

- To firstly select between IP-L and IP-r navigate to 'AtyP'.

### IP-r

Once IP-r is selected the controller must be given a unique 3 digit 'network address' that no other device on the network has (**note** if logging on to a Data Manager, this will be the device ID). Once the ID has been set connect the controller to the IP network for it then to be given an IP address by the DHCP server. To view the IP address given, within the Net menu, navigate to 'IP-r'.

### IP-L

If IP-L has been selected from the 'AtyP' menu the IP address must be set in the controller by navigating to 'IP-L' within the 'Net' menu. The following menu will be available:

Display	Option
IP-1	IP Address byte 1
IP-2	IP Address byte 2
IP-3	IP Address byte 3
IP-4	IP Address byte 4
nL	Network Mask Length (see the <a href="#">network mask length</a> table above)
gt-1	Gateway Address byte 1
gt-2	Gateway Address byte 2
gt-3	Gateway Address byte 3
gt-4	Gateway Address byte 4
ESC	Exit network menu. <b>N.B.</b> this option <b>must</b> be selected to save any changes made in this menu

Once the IP address has been entered, the controller can be connected to the IP network.

## Normal Operation

During normal operation, the controller will display the current time, if there are no alarms and no defrost actions. If there is a current alarm(s) the time will alternate with the alarm status. If the Monitor is on a network and on-line, the green network LED will be on.



Please ensure all power is switched off before installing or maintaining this product.

## Defrost (Type 1 only)

If a defrost signal is received (switched resistor) the Monitor will indicate which channel is in the defrost state and the amber defrost LED will come on. All alarms on that channel will be inhibited during the time the resistor is switched in. Alarms will continue to be inhibited for the duration of the recovery period after the resistor is switched out. **Note:** if the defrost over-run parameter is set to 00:00, the channel will remain in the defrost state until the resistor is removed.

When any channel is in a defrost state, the defrost relay is energised.

## Defrost Over-run (Type 1 only)

A defrost over-run period can be set into the monitor on a per channel basis, if the defrost exceeds this period, the channel will revert to normal operations. Setting this parameter to 00:00 inhibits this function.

## Faults

If a fault is detected, the Monitor will indicate the fault on the display and the red alarm LED will come on.

## Network

The Network green LED flashes if the controller goes off-line or loses its given address.

## Probe Offset

Each probe can be offset by up to  $\pm 10$  °C to compensate for long cable runs.

## Inhibit Alarms (Type 1 only)

Probe alarms can be inhibited on a probe-by-probe basis by selecting the desired channel parameter in the set up mode and pressing 'enter'. This state can be changed back by repeating the above procedure. There is also a timeout function on the alarm inhibit (see parameter table for timeout values).

**Note.** If the channel temperature is **not** within the set alarm limits before the inhibit timeout has elapsed, the channel will stay inhibited and **not** give an alarm.

-xxx **Use this feature with caution** xxx-

## Alarm Relay Action

The alarm relay has; common, NO and NC contact available for use.

This relay will normally be energised (no alarm condition) and be de-energised when an alarm occurs (after the alarm delay time-out).

The table below shows the Alarm relay action:

State	Alarm Delay	Alarm Relay
Probe Fault	Fixed 10 Seconds	x
Channel Under temp	Variable (parameter)	✓
Channel Over temp	Variable (parameter)	✓
Plant Fault	Variable (parameter)	✓

## Viewing I/O

Apart from setting up the controller, you can also view the status of the inputs and outputs and controller states from the display.

From the function menu, select 'IO' and press 'enter'. The IO table can be viewed as set out below. Inputs and outputs that do not apply to a particular controller type will be greyed out.



Please ensure all power is switched off before installing or maintaining this product.

## Input / Output Table

Number	IO	Range °C (°F)	Step	Unit	Type 1	Type 2	Type 3
I-01	Probe 1	-42.0 – 128.0°C (-43.6 – 262.4°F)	0.1	Deg	✓	✓	
	Probe 1	-98.0 – 128.0°C (-144.4 – 262.4°F)	0.1	Deg			✓
I-02	Probe 2	-42.0 – 128.0°C (-43.6 – 262.4°F)	0.1	Deg	✓	✓	
	Probe 2	-98.0 – 128.0°C (-144.4 – 262.4°F)	0.1	Deg			✓
I-03	Probe 3	-42.0 – 128.0°C (-43.6 – 262.4°F)	0.1	Deg	✓	✓	
	Probe 3	-98.0 – 128.0°C (-144.4 – 262.4°F)	0.1	Deg			✓
I-04	Probe 4	-42.0 – 128.0°C (-43.6 – 262.4°F)	0.1	Deg	✓	✓	
	Probe 4	-98.0 – 128.0°C (-144.4 – 262.4°F)	0.1	Deg			✓
I-05	Probe 5	-42.0 – 128.0°C (-43.6 – 262.4°F)	0.1	Deg	✓	✓	
	Probe 5	-98.0 – 128.0°C (-144.4 – 262.4°F)	0.1	Deg			✓
I-06	Probe 6	-42.0 – 128.0°C (-43.6 – 262.4°F)	0.1	Deg	✓	✓	
	Probe 6	-98.0 – 128.0°C (-144.4 – 262.4°F)	0.1	Deg			✓
I-11	Defrost 1	0 (Off), 1 (On)			✓		
I-12	Defrost 2	0 (Off), 1 (On)			✓		
I-13	Defrost 3	0 (Off), 1 (On)			✓		
I-14	Defrost 4	0 (Off), 1 (On)			✓		
I-15	Defrost 5	0 (Off), 1 (On)			✓		
I-16	Defrost 6	0 (Off), 1 (On)			✓		
I-21	Plant Fault 1	0 (Ok), 1 (Alarm)			✓		✓
I-22	Plant Fault 2	0 (Ok), 1 (Alarm)			✓		✓
I-23	Plant Fault 3	0 (Ok), 1 (Alarm)			✓		✓
I-24	Plant Fault 4	0 (Ok), 1 (Alarm)			✓		✓
I-25	Plant Fault 5	0 (Ok), 1 (Alarm)			✓		✓
I-26	Plant Fault 6	0 (Ok), 1 (Alarm)			✓		✓
O-01	Alarm Relay	0 (Off), 1 (On)			✓		✓
O-11	Defrost Relay	0 (Off), 1 (On)			✓		
O-21	Relay 3	0 (Off), 1 (On)			✓		✓
O-22	Relay 4	0 (Off), 1 (On)			✓		✓
O-23	Relay 5	0 (Off), 1 (On)			✓		✓
S-01	Control State 1	0 (Off),1 (Stabilise), 2 (Normal), 3 (Defrost), 4 (Recovery), 5 (Alarm), 6 (Inhibit)			✓		
	Control State 1	0 (Off),1 (Stabilise), 2 (Normal), 3 (Alarm),					✓
S-02	Control State 2	0 (Off),1 (Stabilise), 2 (Normal), 3 (Defrost), 4 (Recovery), 5 (Alarm), 6 (Inhibit)			✓		
	Control State 2	0 (Off),1 (Stabilise), 2 (Normal), 3 (Alarm),					✓
S-03	Control State 3	0 (Off),1 (Stabilise), 2 (Normal), 3 (Defrost), 4 (Recovery), 5 (Alarm), 6 (Inhibit)			✓		
	Control State 3	0 (Off),1 (Stabilise), 2 (Normal), 3 (Alarm),					✓
S-04	Control State 4	0 (Off),1 (Stabilise), 2 (Normal), 3 (Defrost), 4 (Recovery), 5 (Alarm), 6 (Inhibit)			✓		
	Control State 3	0 (Off),1 (Stabilise), 2 (Normal), 3 (Alarm),					✓
S-05	Control State 5	0 (Off),1 (Stabilise), 2 (Normal), 3 (Defrost), 4 (Recovery), 5 (Alarm), 6 (Inhibit)			✓		
	Control State 5	0 (Off),1 (Stabilise), 2 (Normal), 3 (Alarm),					✓
S-06	Control State 6	0 (Off),1 (Stabilise), 2 (Normal), 3 (Defrost), 4 (Recovery), 5 (Alarm), 6 (Inhibit)			✓		
	Control State 6	0 (Off),1 (Stabilise), 2 (Normal), 3 (Alarm),					✓



Please ensure all power is switched off before installing or maintaining this product.

## Display Messages

The following alarms and messages can appear on the Mercury display.

Display Message	System status	Display Message	System status
on	Controller On	Inh4	Inhibit alarms for probe 4
Prb1	Probe 1 Fault	Inh5	Inhibit alarms for probe 5
Prb2	Probe 2 Fault	Inh6	Inhibit alarms for probe 6
Prb3	Probe 3 Fault	Ot 1	Over Temperature Alarm probe 1
Prb4	Probe 4 Fault	Ot 2	Over Temperature Alarm probe 2
Prb5	Probe 5 Fault	Ot 3	Over Temperature Alarm probe 3
Prb6	Probe 6 Fault	Ot 4	Over Temperature Alarm probe 4
Pd1	Control State in Recovery	Ot 5	Over Temperature Alarm probe 5
Pd2	Control State in Recovery	Ot 6	Over Temperature Alarm probe 6
Pd3	Control State in Recovery	Ut 1	Under Temperature Alarm probe 1
Pd4	Control State in Recovery	Ut 2	Under Temperature Alarm probe 2
Pd5	Control State in Recovery	Ut 3	Under Temperature Alarm probe 3
Pd6	Control State in Recovery	Ut 4	Under Temperature Alarm probe 4
deF1	Control State in Defrost	Ut 5	Under Temperature Alarm probe 5
deF2	Control State in Defrost	Ut 6	Under Temperature Alarm probe 6
deF3	Control State in Defrost	PLt1	Plant fault 1
deF4	Control State in Defrost	PLt2	Plant fault 2
deF5	Control State in Defrost	PLt3	Plant fault 3
deF6	Control State in Defrost	PLt4	Plant fault 4
Inh1	Inhibit alarms for probe 1	PLt5	Plant fault 5
Inh2	Inhibit alarms for probe 2	PLt6	Plant fault 6
Inh3	Inhibit alarms for probe 3		

## Network Alarms

The table below shows the text and associated type number that is sent to the system "front end". The type number is normally used to provide different alarm actions.

Alarm text	Type # (index)
Probe 1 faulty	6
Probe 2 faulty	8
Probe 3 faulty	11
Probe 4 faulty	14
Probe 5 faulty	17
Probe 6 faulty	6
Channel 1 over temperature	4
Channel 2 over temperature	9
Channel 3 over temperature	12
Channel 4 over temperature	15
Channel 5 over temperature	18
Channel 6 over temperature	4
Channel 1 under temperature	5
Channel 2 under temperature	10
Channel 3 under temperature	13

Alarm text	Type # (index)
Channel 4 under temperature	16
Channel 5 under temperature	19
Channel 6 under temperature	5
Plant 1 fault	6
Plant 2 fault	8
Plant 3 fault	11
Plant 4 fault	14
Plant 5 fault	17
Plant 6 fault	6
Channel 1 defrost over-run	20
Channel 2 defrost over-run	20
Channel 3 defrost over-run	20
Channel 4 defrost over-run	20
Channel 5 defrost over-run	20
Channel 6 defrost over-run	20

## Probe Offset

This feature allows each probe value to be modified by an 'offset'. Offset values are from -10°C (-18°F) to +10°C (+18°F) and on a channel basis. Example C1 = Probe 1.



Please ensure all power is switched off before installing or maintaining this product.

## Specification

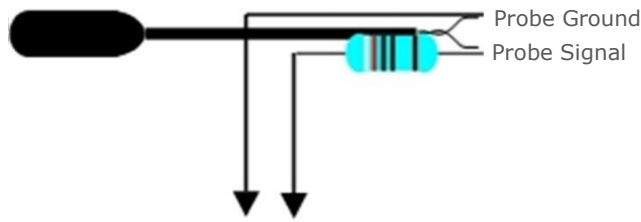
	Mercury Mk3 Monitor PR0740 MON	Intuitive Mercury Monitor PR0760 MON
<b>Power requirements</b>		
<b>Supply Voltage Range</b>	100 – 240 Vac $\pm 10\%$	100 - 240 Vac $\pm 10\%$
<b>Supply Frequency</b>	50 – 60 Hz	50 - 60 Hz
<b>Maximum supply current</b>	5.2 Amps (when relay 5 is fully loaded)	2 Amps
<b>Typical supply current</b>	<1 Amp	<1 Amp
<b>General</b>		
<b>Operating temperature range</b>	-10°C to 60°C (14°F to 140°F)	-10°C to +60°C
<b>Storage temperature range</b>	-20°C to 65°C (-4°F to 149°F)	-20°C to +65°C
<b>Environmental</b>	Indoor use at altitudes up to 2000m, pollution degree 1, installation category II. Voltage fluctuations not to exceed $\pm 10\%$ of nominal voltage.	Indoor use at altitudes up to 2000m, pollution degree 1, installation category II. Voltage fluctuations not to exceed $\pm 10\%$ of nominal voltage.
<b>Size</b>	78mm (W) x 36mm (H) x 110mm (D)	157mm (W) x 67mm (H) x 120 (D)
<b>Approx Weight</b>	177 grams	500 grams
<b>Safety</b>	EN61010	EN61010
<b>EMC</b>	EN61326; 2013	EN61326; 1997 +Amdt. A1; 1998
<b>Ventilation</b>	There is no requirement for forced cooling ventilation	There is no requirement for forced cooling ventilation
<b>Class 2 Insulation</b>	<b>No</b> protective Earth is required and <b>none</b> should be fitted	<b>No</b> protective Earth is required and <b>none</b> should be fitted
<b>Supply Fuse</b>	The host equipment must provide a suitable external over-current protection device such as: - Fuse: 2A 240 Vac Anti-surge (T) HRC conforming to IEC 60127	Built in fuse holder, fuse 2A 240Vac Anti-surge (T) HRC conforming to IEC60127, 32 x 6.3mm
<b>Or MCB</b>	2A, 240 VAC Type C conforming to BS EN 60898	2A, 240 VAC Type C conforming to BS EN 60898. Note: device has integral 2A fuse
<b>Relay Fuse</b>	Not Fitted	10A 240Vac Anti-surge (T) HRC conforming to IEC60127, 32 x 6.3mm
<b>Relay Specification</b>		
<b>Relay 1 – 4</b>		<b>Relays 1 - 5</b>
<b>Max current</b>	6A Resistive ( $\text{Cos}\phi = 1$ ) 2A Inductive ( $\text{Cos}\phi = 0.4$ )	10A Resistive ( $\text{Cos}\phi = 1$ ) 3A Inductive ( $\text{Cos}\phi = 0.4$ )
<b>Max voltage</b>	250Vac, 30V dc	250Vac, 30V dc
<b>Relay Fuse</b>	N/A	10A 240Vac Anti-surge (T) HRC conforming to IEC60127, 32 x 6.3mm
<b>Relay 5</b>		
<b>Max current</b>	3A (non-inductive), $\text{COS}\phi=0.4$ 2A (inductive load) 200,000 operations	
<b>Max voltage</b>	250Vac (Internal supply)	
For compliance with the LVD, relays 3, 4 and 5 commons must be at the same potential as the supply voltage		
<b>Safety</b>	Conforms to EN60730-1 based on UL 60950-1; UL 62368-1 as referenced to IEC60730-1	
<b>Inputs</b>		
Probe Input resistance	3.01K Ohms (for PTC or NTC type probes)	3.01K Ohms (for PTC or NTC type probes)
Probe Input type	Selectable. See: <a href="#">Units</a>	Selectable. See: <a href="#">Units</a>
Digital Inputs	Volt Free	Volt Free
<b>Comms</b>		
Serial Variant	RS232 with flow control	RS232 with flow control
Ethernet Variant	IP comms	IP comms



Please ensure all power is switched off before installing or maintaining this product.

## Switched Resistor Example Wiring

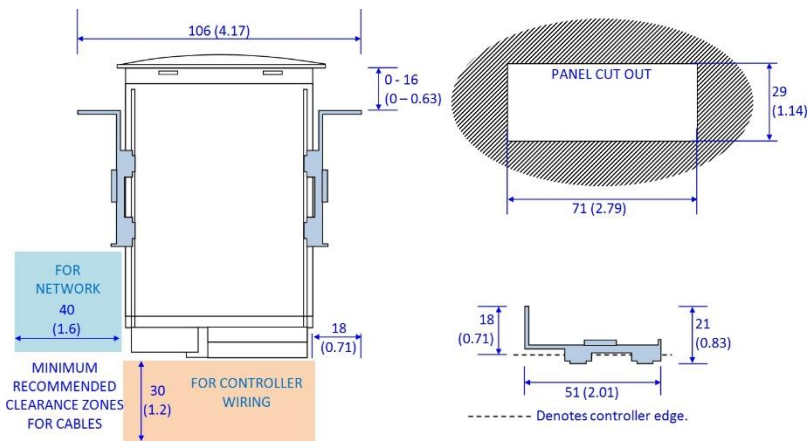
Example of a resistor fitted on a probe input connected to remote switch or relay.



Connection to Remote Switch or Relay

## Installation

### Panel Cut-out and Clearance - Mercury Mk3 (Flush mount controller)

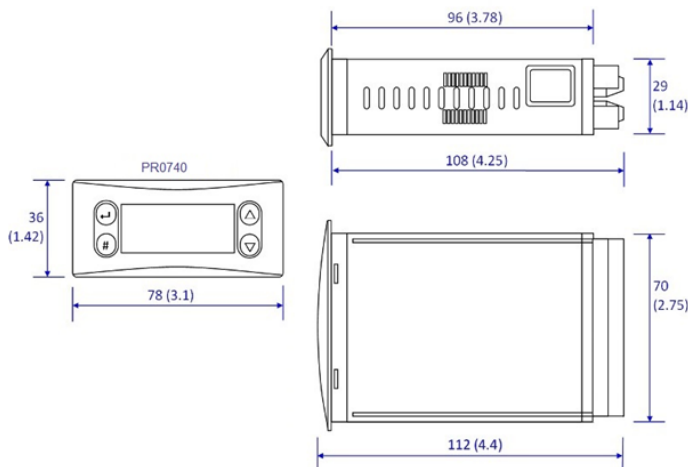


### Fixing

The controller is fixed by sliding the 2 plastic retaining clips up to rear of the panel. These clips have a ratchet action and can be removed by holding in the clip sides and sliding back.

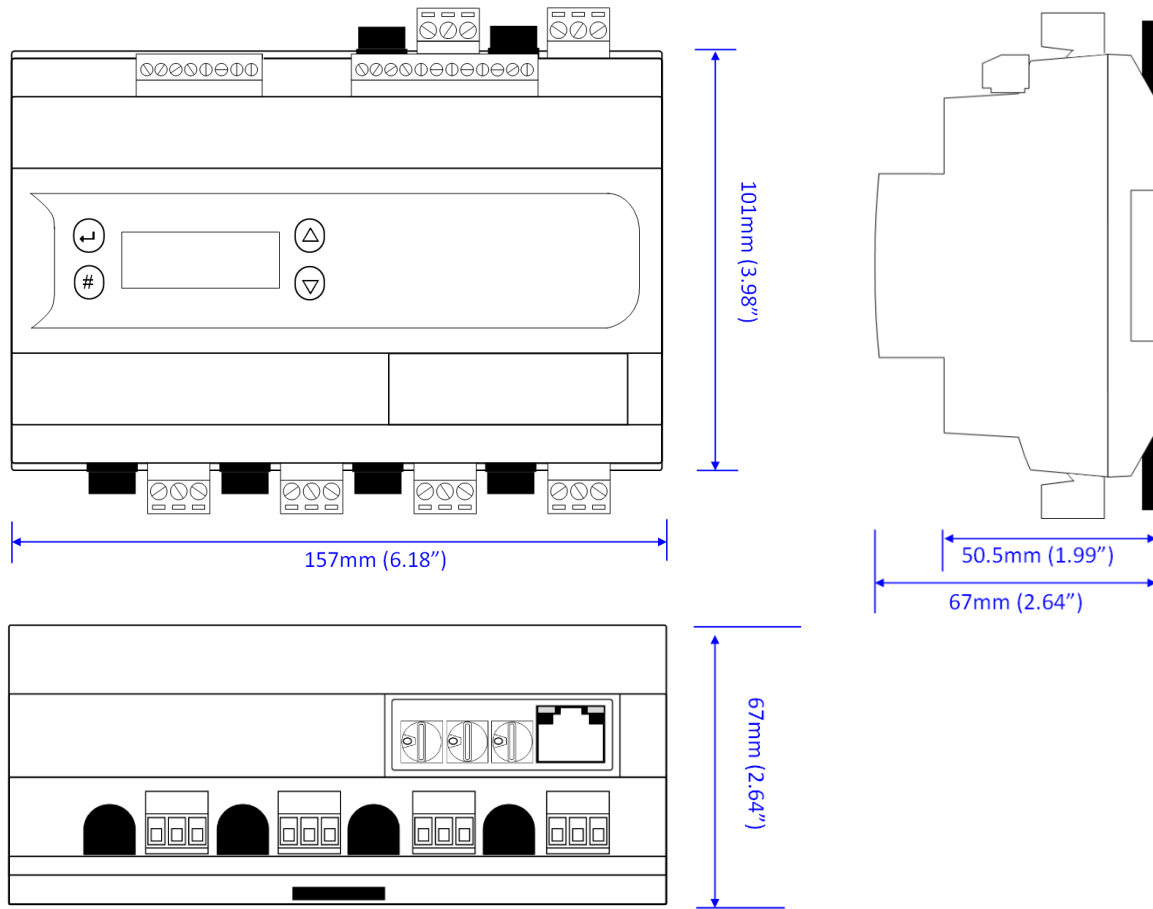
There is no requirement for forced cooling ventilation

## Dimensions – Mercury Mk3

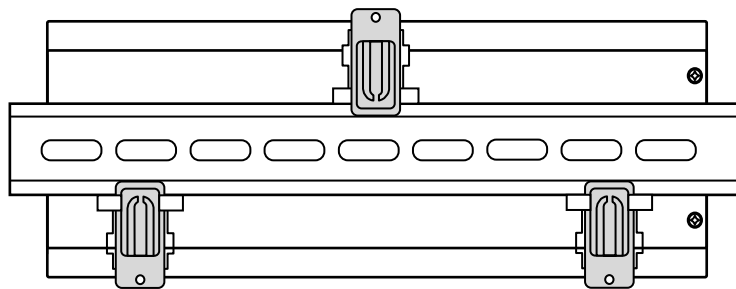


Please ensure all power is switched off before installing or maintaining this product.

## Dimensions - Intuitive Mercury Controller



## Intuitive Mercury Mounting Instructions



Three clips fix the Intuitive Mercury securely to DIN rail. Pull each clip until it “clicks” to remove the controller. Each clip has a mounting hole to provide an alternative fixing mechanism to DIN mounting.

## Cleaning

Do not wet the controller when cleaning. Clean the front by wiping with slightly dampened lint free cloth.



Please ensure all power is switched off before installing or maintaining this product.

## Appendix 2: Webpage Appearance

It is possible to view the controller across an IP connection using one of the methods outlined in the [Network Configuration](#) section

The following screens are samples of how values and settings appear when viewed through a PC/Laptop connection.

The user has a choice of entering the following pages: - **Inputs & Outputs, Parameters, Alarms, Logs & Configure.**

### Inputs & Outputs

Inputs & Outputs												
Probe Inputs			Defrost Inputs			Plant Inputs			Outputs		States	
Probe 1	24.1	°C	Defrost 1	Off		Plant 1	OK		Alarm Relay	OK	Control State 1	Normal
Probe 2	23.4	°C	Defrost 2	Off		Plant 2	OK		Defrost Control	Off	Control State 2	Normal
Probe 3	24.1	°C	Defrost 3	Off		Plant 3	OK		Remote Relay 1	Off	Control State 3	Normal
Probe 4	11.2	°C	Defrost 4	Off		Plant 4	OK		Remote Relay 2	Off	Control State 4	Normal
Probe 5	11.2	°C	Defrost 5	Off		Plant 5	OK		Remote Relay 3	Off	Control State 5	Normal
Probe 6	10.2	°C	Defrost 6	Off		Plant 6	OK				Control State 6	Normal

This is view only screen and shows the states of the inputs and outputs.

### Parameters

Parameters											
Channel 1		Channel 2		Channel 3		Channel 4		Channel 5		Channel 6	
Chan 1 Select	Probe	Chan 2 Select	Probe	Chan 3 Select	Probe	Chan 4 Select	Probe	Chan 5 Select	Probe	Chan 6 Select	Probe
Chan 1 Prb Slug	No	Chan 2 Prb Slug	No	Chan 3 Prb Slug	No	Chan 4 Prb Slug	No	Chan 5 Prb Slug	No	Chan 6 Prb Slug	No
Chan 1 UT	15.0 °C	Chan 2 UT	15.0 °C	Chan 3 UT	15.0 °C	Chan 4 UT	5.0 °C	Chan 5 UT	5.0 °C	Chan 6 UT	5.0 °C
Chan 1 OT	30.0 °C	Chan 2 OT	30.0 °C	Chan 3 OT	30.0 °C	Chan 4 OT	12.0 °C	Chan 5 OT	12.0 °C	Chan 6 OT	12.0 °C
Chan 1 Alm Dly	20:00 mm:ss	Chan 2 Alm Dly	20:00 mm:ss	Chan 3 Alm Dly	20:00 mm:ss	Chan 4 Alm Dly	20:00 mm:ss	Chan 5 Alm Dly	20:00 mm:ss	Chan 6 Alm Dly	20:00 mm:ss
Chan 1 Recovery	20:00 mm:ss	Chan 2 Recovery	20:00 mm:ss	Chan 3 Recovery	20:00 mm:ss	Chan 4 Recovery	20:00 mm:ss	Chan 5 Recovery	20:00 mm:ss	Chan 6 Recovery	20:00 mm:ss
Chan 1 Inhibit	30:00 mm:ss	Chan 2 Inhibit	30:00 mm:ss	Chan 3 Inhibit	30:00 mm:ss	Chan 4 Inhibit	30:00 mm:ss	Chan 5 Inhibit	30:00 mm:ss	Chan 6 Inhibit	30:00 mm:ss
Chan 1 Over Run	60:00 mm:ss	Chan 2 Over Run	60:00 mm:ss	Chan 3 Over Run	60:00 mm:ss	Chan 4 Over Run	60:00 mm:ss	Chan 5 Over Run	60:00 mm:ss	Chan 6 Over Run	60:00 mm:ss

This is a view only screen and shows the parameter settings



Please ensure all power is switched off before installing or maintaining this product.

## Alarms

Alarms		
Reason	Occurred	Cleared
Channel 3 OT	11:24:32 01/06/20	11:24:36 01/06/20
Channel 1 UT	11:23:32 01/06/20	11:23:43 01/06/20
Channel 3 OT	11:23:22 01/06/20	11:23:36 01/06/20
Channel 2 UT	11:22:32 01/06/20	11:23:27 01/06/20
Channel 4 UT	11:22:32 01/06/20	11:23:07 01/06/20
Channel 3 OT	11:22:32 01/06/20	11:22:43 01/06/20

This is a view only screen showing the alarm log.

## Logs

Logs								
	11:29:20 01/06/20	11:29:25 01/06/20	11:29:30 01/06/20	11:29:35 01/06/20	11:29:40 01/06/20	11:29:45 01/06/20	11:29:50 01/06/20	11:29:55 01/06/20
Probe 1	24.1	24.1	24.1	24.1	24.1	24.1	24.1	24.1
Probe 2	23.4	23.4	23.4	23.4	23.3	23.3	23.3	23.3
Probe 3	24.1	24.1	24.1	24.1	24.1	24.1	24.1	24.1
Probe 4	11.2	11.2	11.2	11.1	11.1	11.1	11.1	11.1
Probe 5	11.2	11.2	11.2	11.2	11.2	11.2	11.2	11.2
Probe 6	10.2	10.2	10.2	10.2	10.2	10.2	10.2	10.2

This is a view only screen showing the device's log.

## Configure

Alternatively, click on the **Configure** button to access the setup menu.

**Note:** login credentials required to access Configure menu are as follows;

Username: `service`  
Password: `1234`

Configure
Time
Parameters
Controller Type
Temperature Units
Name
Logging
Asset Information
Probe Offsets

This screen allows the user to configure the controller and set-up the following: - Time, Parameters, Controller Type, Name, Logging, Asset Information and Probe Offsets.



Please ensure all power is switched off before installing or maintaining this product.

## Time Screen

### Time

Enter time:

Enter the time and date in the format displayed and press "Set Time" to update the controller. A screen showing the set time will be displayed, and then revert to the initial (Home) screen.

## Parameter Screen

### Set Parameters

**Use Set Parameters button to save changes before changing section**

Parameter Name	Low	High	Default	Value	Units
Chan 1 Select				Probe <input type="button" value="v"/>	
Chan 1 Prb Slug				No <input type="button" value="v"/>	
Chan 1 UT	-42.0	128.0	-2.0	<input type="text" value="-2.0"/>	°C
Chan 1 OT	-42.0	128.0	5.0	<input type="text" value="5.0"/>	°C
Chan 1 Alm Dly	00:00	99:00	20:00	<input type="text" value="20:00"/>	mm:ss
Chan 1 Recovery	00:00	99:00	20:00	<input type="text" value="20:00"/>	mm:ss
Chan 1 Inhibit	00:00	99:00	30:00	<input type="text" value="30:00"/>	mm:ss
Chan 1 Over Run	00:00	99:00	60:00	<input type="text" value="60:00"/>	mm:ss

This screen allows the parameters to be changed. Once the values are changed, the "Set Parameter" button must be clicked to set the parameters into the controller. A screen will show the number of parameters and the number changed, then revert back to the Home screen.

## Controller Type

### Controller Type

This screen allows the controller type to be changed. For this controller, there are 3 types (Monitor, Probe Tester and LT Monitor).



Please ensure all power is switched off before installing or maintaining this product.

### Temperature Units

#### Temperature Units

2k °C ▾

Set Units

This screen allows the user to set the probe type for the controller and if it's in degrees Celsius or Fahrenheit.

### Name

#### Name

Enter Name:

Set Name

This screen allows the user to give the controller a name. Type in a name of your choice (upper or lower case alpha-numeric) up to 32 characters. Click "Set Name" to load into the controller. A screen will show the name has been set and then revert back to the Home screen. (The Home screen will also now show the controller name.)

### Logging

#### Logging

Set 1		Set 2	
Log Interval	5s ▾	Log Interval	None ▾
Probe 1	<input checked="" type="checkbox"/>	Probe 1	<input type="checkbox"/>
Probe 2	<input checked="" type="checkbox"/>	Probe 2	<input type="checkbox"/>
Probe 3	<input checked="" type="checkbox"/>	Probe 3	<input type="checkbox"/>
Probe 4	<input checked="" type="checkbox"/>	Probe 4	<input type="checkbox"/>
Probe 5	<input checked="" type="checkbox"/>	Probe 5	<input type="checkbox"/>
Probe 6	<input checked="" type="checkbox"/>	Probe 6	<input type="checkbox"/>
Alarm Relay	<input type="checkbox"/>	Alarm Relay	<input type="checkbox"/>
Defrost Control	<input type="checkbox"/>	Defrost Control	<input type="checkbox"/>
Remote Relay 1	<input type="checkbox"/>	Remote Relay 1	<input type="checkbox"/>
Remote Relay 2	<input type="checkbox"/>	Remote Relay 2	<input type="checkbox"/>
Remote Relay 3	<input type="checkbox"/>	Remote Relay 3	<input type="checkbox"/>
Control State 1	<input type="checkbox"/>	Control State 1	<input type="checkbox"/>
Control State 2	<input type="checkbox"/>	Control State 2	<input type="checkbox"/>
Control State 3	<input type="checkbox"/>	Control State 3	<input type="checkbox"/>
Control State 4	<input type="checkbox"/>	Control State 4	<input type="checkbox"/>
Control State 5	<input type="checkbox"/>	Control State 5	<input type="checkbox"/>

Set Values

This screen allows the user to set the logging features. There are two sets so that values can have different log intervals. Set the interval required on set1 and set 2, tick the required values to be logged, then click "Set Values" to load into the controller. A screen will display "Log configuration set" then revert back to the Home page.



Please ensure all power is switched off before installing or maintaining this product.

## Asset Information

### Asset Information

Controller		Equipment Manufacturer	
Model		Manufacturer	
Serial No		Model	
Date		Serial No	
		Date	

Installed Fixture		Refurbished Fixture	
Asset		Refurb By	
Installer		Re-Asset	
Date		Installer	
		Date	

This screen allows the user to set asset information into the controller.

**Caution: This is a once only operation.**

Click "Set Information" and follow the on screen instructions to set up your asset information.

## Probe Offsets

### Probe Offsets

Probe	Low	High	Value	Units
1	-10	10	<input type="text" value="0.0"/>	°C
2	-10	10	<input type="text" value="0.0"/>	°C
3	-10	10	<input type="text" value="0.0"/>	°C
4	-10	10	<input type="text" value="0.0"/>	°C
5	-10	10	<input type="text" value="0.0"/>	°C
6	-10	10	<input type="text" value="0.0"/>	°C

This screen allows the user to set a probe offset between -10 – +10 degrees to any of the six probes connected to the controller.



Please ensure all power is switched off before installing or maintaining this product.

## Set Password

**Set Password**

DO NOT change the password if you are unsure of the effect it may have.  
**Note: RDM frontends running earlier versions of software may require the old default password.**

Enter Password:

Re-enter Password:

This screen allows the user to change the password from the default '1234'. Please be aware that this could have an adverse effect on communications between a RDM frontend running an older software version. Please contact RDM Technical Support for more information.

## Disclaimer

The specifications of the product detailed in this document may change without notice. RDM Ltd shall not be liable for errors or omissions, for incidental or consequential damages, directly or indirectly, in connection with the furnishing, performance or misuse of this product or document.

## Revision History

Revision	Date	Changes
3.0a	08/05/2015	Introduction of Mercury 3 range.
3.0b	03/11/2015	Connections drawing updated.
3.0c	16/06/2016	Update to ordering information.
3.0d	06/03/2017	New documentation format.
3.0e	17/05/2017	Operating temperature amended.
3.0f	01/05/2018	Amended part numbers.
3.0g	31/05/2019	I/O table updated, Contact details updated.
3.0h	30/08/2019	Intuitive Mercury hardware added
3.0i	30/01/2020	Update to specification
3.0j	05/06/2020	Added Webpage appearance Appendix
3.0k	08/04/2022	PR0750 part number added
3.2	17/01/2024	Ability to change the password from default added. Bluetooth support added.



Please ensure all power is switched off before installing or maintaining this product.

## Group Offices

### RDM Group Head Office

80 Johnstone Avenue  
Hillington Industrial Estate  
Glasgow  
G52 4NZ  
United Kingdom

+44 (0)141 810 2828  
[support@resourcedm.com](mailto:support@resourcedm.com)

### RDM USA

9441 Science Center Drive  
New Hope  
Minneapolis, MN  
55428  
United States

+1 612 354 3923  
[usasupport@resourcedm.com](mailto:usasupport@resourcedm.com)

### RDM Asia

Sky Park at One City  
Jalan USJ 25/1  
47650 Subang Jaya  
Selangor  
Malaysia

+60 3 5022 3188  
[asiatech@resourcedm.com](mailto:asiatech@resourcedm.com)



Visit [www.resourcedm.com/support](http://www.resourcedm.com/support) for more information on RDM solutions, additional product documentation and software downloads.

While every effort is made to ensure the information given within this document is accurate, Resource Data Management Ltd shall not be liable for errors or omissions, for incidental or consequential damages, directly or indirectly, in connection with the furnishing, performance or misuse of this product or document. All specifications are subject to change without notice.

See [www.resourcedm.com](http://www.resourcedm.com) for terms and conditions of sales.

Copyright © Resource Data Management