

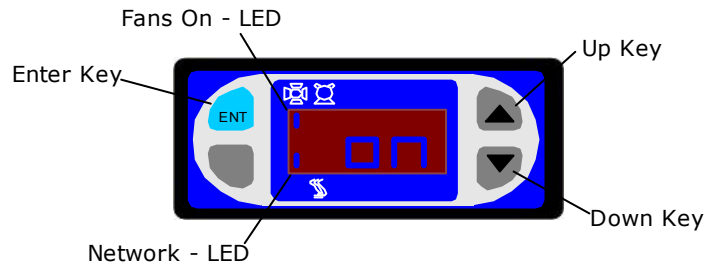
RDM Multi-Stage Thermostat PR0101

Installation Guide

Multi-Stage Thermostat Controllers comprise of a DIN size Front Panel Controller, a combined Relay/PSU module and Temperature Probe(s).

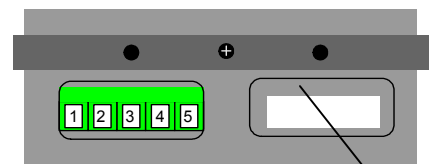
The Multi-Stage Thermostat main features are: -

- Cooling and Heating applications
- Celsius or Fahrenheit temperature display
- Four stage thermostat
- Probe 1: Air probe (With alarm)
- Probe 2: Air probe (With alarm)
- Probe 3: Air probe (Monitoring Only)
- Programmable parameters
- 15A Fan control relay
- High volume Alarm buzzer
- Network connection to RDM IP network
- 1 Plant input
- Probe Type - 2K NTC Thermistor



Front View

Rear View



Inputs: -

- 1 Probe 1
- 2 Ground
- 3 Probe 2
- 4 Probe 3
- 5 Plant Fault

Cable to relay board exits from here

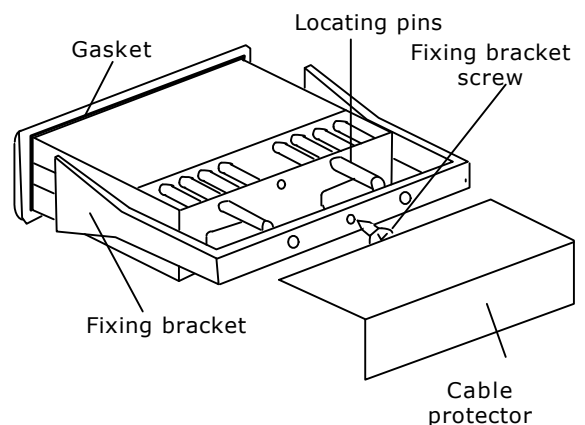
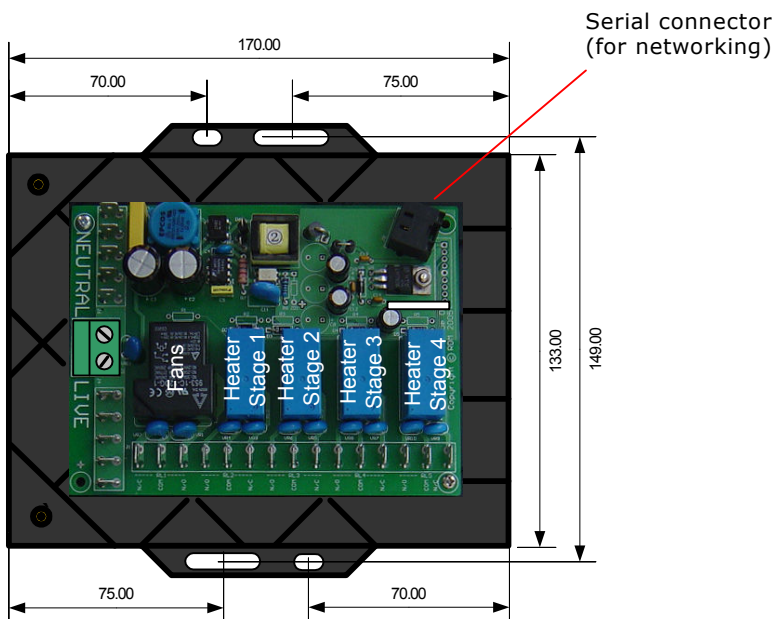
Mounting Instructions

1. Remove cable protector from the controller locating pins.
2. Remove the screw and detach the fixing bracket.
3. Fit the controller, with the gasket in a suitable DIN size hole. (71mm x 29mm)
4. Locate the fixing bracket in the slots, then slide to engage the pins.
5. Insert the screw then tighten until the fixing bracket secures the controller.
6. Attach the probe(s) and plant fault wiring.
7. Fix the cable protector by locating the pins and gently pushing until secure.
8. Fix the Relay/PSU module in an appropriate position using the slots provided.
9. Remove the cover and plug in the controller (use the knock-outs provided)
10. Fit the necessary control wiring using the knock-outs provided.

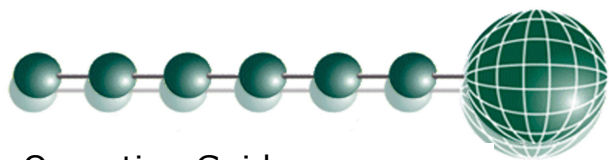
Menu items

IO	Displays inputs and outputs
PA	View or change parameters
UN	Change units
NE	Change network settings
SO	View software version
ES	Escape back to normal operation

Un = 0; Degree Celsius
 Un = 1; Degree Fahrenheit

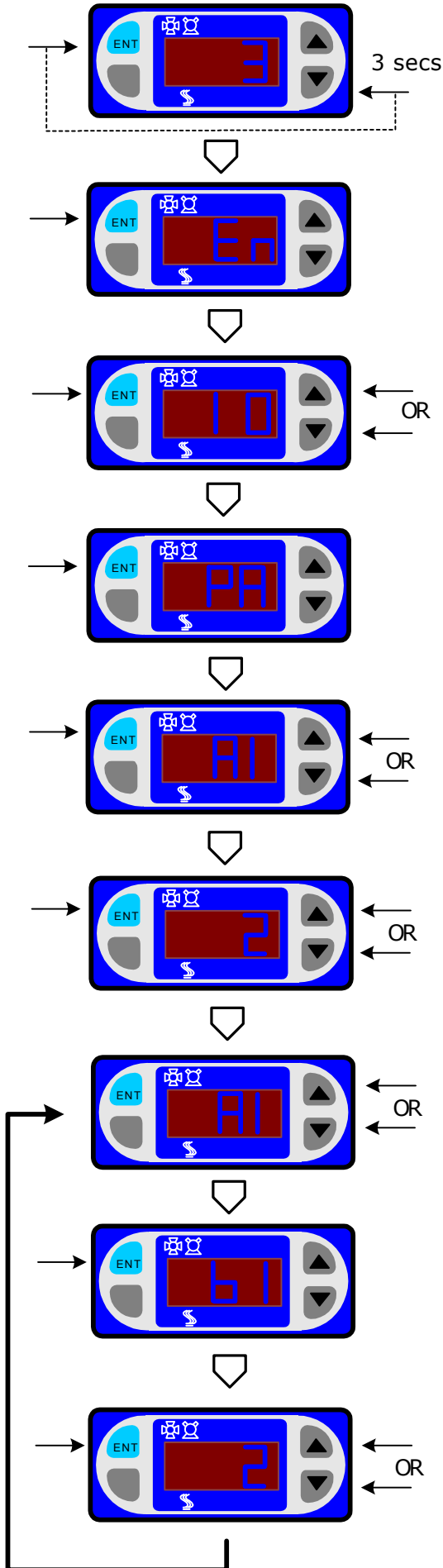


Please refer to the user and installation guide, found on the RDM website, for full setup details and features



Operation Guide

Changing Menu items



Parameter	Description	Min	Max	Default
A1	Fans Mode	0 = Off 1 = On	2 = Remote	2
b1	Stat 1 Type	0 = Off 1 = Cooling	2 = Heating	2
b2	Stat 1 Probe Weight * See note	0%	100%	50%
b3	Stat 1 Setpoint	-40°	86°	15°
b4	Stat 1 Diff	0°	50°	1°
b5	Stat 1 OT	-40°	86°	30°
b6	Stat 1 UT	-40°	86°	-5°
b7	Stat 1 Alarm Delay	0 min	60 min	20 min
C1	Stat 2 Type	0 = Off 1 = Cooling	2 = Heating	2
C2	Stat 2 Probe Weight * See note	0%	100%	50%
C3	Stat 2 Setpoint	-40°	86°	18°
C4	Stat 2 Diff	0°	50°	1°
C5	Stat 2 OT	-40°	86°	30°
C6	Stat 2 UT	-40°	86°	-5°
C7	Stat 2 Alarm Delay	0 min	60 min	20 min
d1	Stat 3 Type	0 = Off 1 = Cooling	2 = Heating	2
d2	Stat 3 Probe Weight * See note	0%	100%	50%
d3	Stat 3 Setpoint	-40°	86°	20°
d4	Stat 3 Diff	0°	50°	1°
d5	Stat 3 OT	-40°	86°	30°
d6	Stat 3 UT	-40°	86°	-5°
d7	Stat 3 Alarm Delay	0 min	60 min	20 min
E1	Stat 4 Type	0 = Off 1 = Cooling	2 = Heating	2
E2	Stat 4 Probe Weight * See note	0%	100%	50%
E3	Stat 4 Setpoint	-40°	86°	22°
E4	Stat 4 Diff	0°	50°	1°
E5	Stat 4 OT	-40°	86°	30°
E6	Stat 4 UT	-40°	86°	-5°
E7	Stat 4 Alarm Delay	0 min	60 min	20 min
F1	Plant Fault	0 = Off	1 = N/O 2 = N/C	0
F2	Alarm Duration	0 min = Buzzer Off	60 min 61 = cont	5 min
dt	Factory Defaults			

* **Note** - If probe weight set to 100% then Stat will control on probe 1 only.
 If probe weight set to 0% then Stat will control on probe 2 only.
 If 50% is entered then Stat will control using 50% of probe 1 & 50% of probe 2.