

## Installation of internal GSM Modem for Data Manager

*Before working on this equipment, ensure that the device is fully isolated from any supply voltage, including connections to all relays and other I/O connectors.*

*Installation of this part must be carried out by competent personnel*

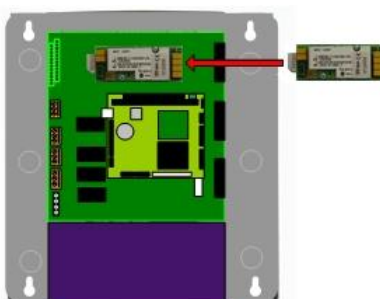
*RDM will not be held responsible for any damage incurred to the equipment through mishandling or faulty installation of this part*

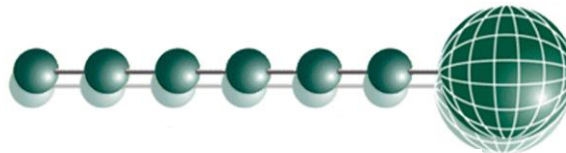
### Instructions:

1. Remove the left and right side wings by unscrewing the 2 bolts at the top and bottom of each wing.
2. Carefully remove the front plastic cover to reveal the main printed circuit board. Note contact RDM Technical Support if a warranty label is present on the securing screw to maintain any warranty on the device. Remove the securing screw on the right hand side of the front plastic part, then press in the retaining legs at the top and bottom to release their clip action. Once the front panel is free from the main housing, it must be positioned such that the upper part of the main printed circuit board can be accessed without the connectors to the main front panel being pulled out.
3. Ensure the contract SIM is enabled for data and fax use and that you have the number that relates to data and not voice calls.
4. Before removing the modem from its' packaging, make sure that you are static free.
5. Remove the modem from it's packaging and insert the SIM as shown below: -



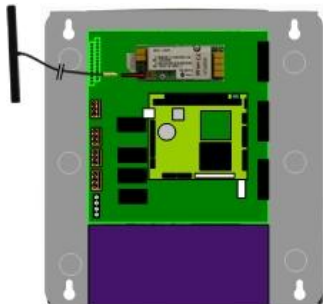
6. Now fit the GSM modem into the socket on the Data Manager, as shown below, taking care to align the pins with the socket connections: -





## Data Manager GSM Modem Installation Guide

7. Next fit the aerial to the modem (this is a “push and click” fit, not a “screw” type) as shown below: -



Ensure that the aerial cable is routed through a suitable hole in the Data Manager enclosure, as it requires to be fitted in a location outside of the panel.

8. Next replace the Data Managers' front cover and secure it with the screw; as shown below: -



9. Replace the left and right wings and secure with the 4 screws.
10. Extend the aerial and fix it to the wall using the self adhesive pad provided. Place the antenna in an area or position which has the strongest signal strength.
11. The GSM modem hardware installation is now complete.
12. Set up the GSM modem in the Data Manager to dial any number (such as your office or home). Go to the alarm actions and perform a "Modem Test Dial out". This will activate the SIM on the network. Note. This operation must be done first.
13. Set up a dial-In procedure to test the presence of the GSM modem. If it doesn't work, try the fax number, as sometimes the operator gets the data and fax numbers the wrong way round.

Note the use of a Pay-As-You-Go SIM card may not be possible as not all providers support Data calls. Therefore a contract SIM will be required in most instances.

Use the Data Manager Installation Guide to configure the alarm actions and modem destinations.